

go guide



YOUR Adventure BEGINS HERE!



SKYTOUR • ADVENTURE TOURS • ALPINE COASTER • RESTAURANT • LODGING



Aerie's is located on a bluff overlooking the confluence of the Mississippi and Illinois Rivers above downtown Grafton, Illinois providing a stunning view that captivates any visitor. **BRING A FRIEND, OR YOUR FAMILY, WE HAVE A BUNCH IN STORE FOR YOU!**



Aerie's Adventure Tours are Here! - Explore the Aerie's bluffs on a UTV for a memorable journey.

45 minutes from downtown St. Louis MO & Lambert International Airport On the Scenic Byway in Grafton, IL

AERIE'S

RESORT

(618)786-8439
aeriesresort.com

  @aeriesresort





The Best View in the Midwest

TABLE OF contents

- 02** Happy Birthday Route 66
- 06** Going with the Flow
- 08** The Art of The Crust
- 10** Weekend Warriors
- 14** Celebrating America's 250th
- 16** River Towns
- 18** Miles-Stone
- 20** Giant Sized Adventures
- 24** Byway Discoveries
- 28** Sunny Delights
- 30** Savor the Hour
- 32** Game On
- 35** Festival Season is Calling
- 36** Treasure Trove
- 38** Made Here



Stay Connected

-  [Facebook.com/RiversandRoutes](https://www.facebook.com/RiversandRoutes)
-  [Instagram.com/RiversandRoutes](https://www.instagram.com/RiversandRoutes)
-  [YouTube.com/RiversandRoutes](https://www.youtube.com/RiversandRoutes)
-  [TikTok.com/@riversandroutestourism](https://www.tiktok.com/@riversandroutestourism)

*Hi I'm River Rae!
I'm the new mascot for the Byway
Discovery Center at Great Rivers
Park. Find out
more about me on
Page 24 of this Go
Guide!*

Photo Credits:
Scott Evers, Larry McMillen,
STL From Above, Marty McKay,
Mark Ahlvers, Starboard and Port



HAPPY BIRTHDAY ROUTE 66

Scan here for more
about Route 66 in
southwest Illinois



Collinsville
ILLINOIS

It began as a dream highway – a connection between the Midwest and the Pacific Coast. In reality, this two-lane road, ultimately christened **Route 66**, became a national treasure and grew to almost mythical proportions in stories and adventures travelers experienced along its nearly 2,400-mile length.

April marks the official 100-year anniversary of Route 66, also referred to as The Mother Road, which is a staple of pop culture as the Main Street of America.

Southwest Illinois is celebrating this historic highway all year long – focusing on The Last 100 Miles of Route 66 in Illinois which is full of kitschy roadside attractions, local lore and pure Americana experiences.

Hop in your car. Roll down your windows and take a ride along Route 66 in southwest Illinois. It's going to be an adventure of a lifetime!

GET YOUR KICKS ON ROUTE 66 IN SOUTHWEST ILLINOIS.

Discover some of the best things to see and do on Route 66 in southwest Illinois.

Doc's Just Off 66, Girard – Step up to the counter and order a fountain soda, phosphate or float and browse through this former 1884 pharmacy for hidden treasures. Lunch and dinner also served.

Cannonball Jail, Carlinville – Tour this Route 66 icon and 'escape proof' jail built after the Civil War.

Litchfield Museum & Route 66 Welcome Center – Follow the history of Route 66 in southwest Illinois at this museum and welcome center featuring neon signs, a Model T and a look at the evolution of Litchfield itself.

Ariston Café, Litchfield – A Route 66 destination for more than 100 years hosting travelers for lunch and dinner as a roadside stop.

Soulsby Service Station, Mt. Olive – Bright yellow gas pumps shine at this now closed gas station that opened in 1926. The station has been preserved and is open to visitors.

DeCamp Station, Staunton – Classic roadhouse diner still serving up fresh food daily.

Pink Elephant Antique Mall, Livingston – Home to a giant pink elephant and a massive indoor antique shop.

Wilkey Theatre, Edwardsville – Once a major Vaudeville stop, the theatre features outstanding entertainment every weekend.

West End Service Station, Edwardsville – Once a popular stop along the road, the station has been refurbished and now serves as a museum and welcome center.

Chain of Rocks Bridge, Madison – Spanning nearly a mile across the Mississippi River linking Illinois to Missouri, this classic bridge is now only open to pedestrian and bicycle traffic.

It's Electric Neon Sign Park, Granite City – Historic neon signs, two larger than life murals and more dot the landscape at this whimsical Route 66 attraction.

Cahokia Mounds State Historic Site, Collinsville – A UNESCO World Heritage Site and one of the few Native American mounds systems found north of Mexico.

Brooks Catsup Bottle Water Tower, Collinsville – The world's largest catsup bottle water tower stands at 170-feet tall.



POSTCARD MURAL TRAIL HIGHLIGHTS

Follow Route 66 through southwest Illinois and find the collection of 14 Americana-themed murals and 8 Shield Monuments dedicated to the landmark highway.

- Virden:** 123 N. Springfield St.
- Girard:** 133 S. 2nd St.
- Farmersville:** 516 Elevator St.
- Carlinville:** 131 N. Broad St.
- Litchfield:** Old Rt. 66 N. Victory Lane
- Gillespie:** 225 S. Macoupin St.
- Mt. Olive:** 502 E. Old Rt. 66
- Staunton:** 8767 State Rt. 4
- Livingston:** 908 Veterans Memorial Dr.
- Hamel:** 11 S. Old Rt. 66
- Edwardsville:** 100 E. Vandalia St.
- Collinsville:** 225 W. Main St.
- Granite City:** 1204 Niedringhaus Ave.
- East St. Louis:** 1314 St. Clair Ave.



ROUTE 66 MONUMENTS

- Girard:** 133 S. 2nd St.
- Carlinville:** 215 S. East St.
- Gillespie:** 115 Macoupin St.
- Litchfield:** 1101 W. Union Ave.
- Hamel:** 11 S. Old Rt. 66
- Edwardsville:** 145 W. St.
- Collinsville:** E. Clay St.
- Granite City:** 1243 Niedringhaus Ave.



CLASSIC ROUTE 66 EVENTS

- MAY 09** **ROUTE 66 CENTENNIAL BIG FOOT FESTIVAL**
Pink Elephant Antique Mall, Livingston
- JUN 5-6** **INTERNATIONAL HORSERADISH FESTIVAL**
Uptown Collinsville
- JUN 06** **OFFICIAL ROUTE 66 CENTENNIAL JEEP RUN**
The Last 100 Miles of Route 66
Litchfield to Granite City
- JUN 13** **ROUTE 66 FESTIVAL**
City Park, Edwardsville
- JUN 13** **NO CHIPS' CRUISIN' THE CENTURY: CAR SHOW**
Girard
- JUN 20** **CATSUP BOTTLE FESTIVAL**
Uptown Collinsville
- JUN 20** **THE GREAT RACE**
Uptown Collinsville
- JUN 20** **SMOKIN ON 66**
Pink Elephant Antique Mall, Livingston
- JUN 26** **ROUTE 66 JUBILEE**
Carlinville





Route 66 in southwest Illinois



Brooks Catsup Bottle Water Tower



Farmersville Postcard Mural



Pink Elephant Antique Mall



West End Service Station Edwardsville



Twistee Treat Diner



It's Electric Neon Sign Park

GOING WITH THE FLOW

Let the rivers of southwest Illinois lead the way to new adventures this spring and summer.

Three mighty rivers lance through the Great Rivers & Routes region providing opportunities for boating, fishing, and unparalleled outdoor fun. Here are a few places to enjoy river-based activities.

Sail your boat into the calm waters of area harbors and marinas that offer shelter, refreshments and fun along the banks of the Mississippi River. Here are a few places to tie up:



ALTON MARINA:

1 Henry St. 618-462-9860



GRAFTON HARBOR:

215 W. Water St. 618-786-7678



KAYAK KIOSKS

Dip a paddle in the Mighty Mississippi or Illinois rivers. It's easy to do with a kayak rental from one of the half dozen kayak kiosks that dot the river-centric landscape along the Great River Road. Kayakers can rent a kayak, paddle and safety equipment from any kiosk at the following locations: Belk Park, Wood River; Horseshoe Lake State Park, Collinsville; Byway Discovery Center at Great Rivers Park, Godfrey; Pere Marquette State Park, Grafton; Hardin Riverfront; Grafton Riverfront.

TRAVEL TIP:

The Mississippi River Boat Ramp is available for those bringing boats by land. It is located between the Alton Marina and Clark Bridge.



COME RIDE WITH US

Take a ride on the Grafton Ferry this summer and enjoy a leisurely trip across the waters of the Mighty Mississippi River to the charming river city of Grafton. The best part? Stunning scenic views along the way.

The ferry will begin operations in April connecting Missouri to Illinois with landings in the St. Charles, MO area and Grafton. This year the ferry expands its operations to seven days a week and 365 days a year opening the door for even more access to local shopping, dining and outdoor adventures.

FERRY HOURS

Monday – Thursday: 5 a.m. to 9 p.m.
Friday & Saturday: 5 a.m. to 10 p.m.
Sunday: 8 a.m. to 9 p.m.

FERRY FARES

Cars: \$10 one way | \$19 rt
Semis: \$15
Motorcycles: \$7 one way | \$13 rt
Bicycles: \$6 one way
Pedestrians: \$5 one way



COME RIDE WITH US!



National Great Rivers Museum - the Home of Riverbend Water Safety!

Open Daily 9AM- 5PM | Dam Tours at 10AM, 1PM, 3PM

2 Lock and Dam Way, East Alton, Illinois 62024

(618) 462-6979 | www.MTRF.org | [@GreatRivers](https://www.facebook.com/GreatRivers)



THE *art* OF THE CRUST

When it comes to pizza, southwest Illinois serves up some of the best around. The secret? It's the perfect crust. Try these and see for yourself.



OB SLICES
4 E. Broadway, Alton



PEEL WOOD FIRED PIZZA
100 Quarz Knoll, Edwardsville



GOOD NEWS BREWING
300 Alby St., Alton



Old Bakery Beer Co.
400 Landmarks Blvd., Alton

GRAFTON 2026 EVENT CALENDAR

Get Lost
IN GRAFTON

Grafton Riverside Flea Market

Every fourth weekend

April – October

Mississippi Masters

Golf Tournament

May 1

Sip, Sample & Stroll

May 9

Grafton Bike Week

May 12-17

Music in the Park

Every Thursday for 18 weeks

begins May 28

National Memorial of Military Ascent Grand Opening

June 6

City of Grafton Fireworks

July 5

Witches on the Water

October 17

Grafton Country Music Festival

November 6-8

Holiday Treats Trail

December 5

Santa Con

December 12

Lighted Holiday Parade

December 19

New Years Eve Fireworks

December 31



PORT of GRAFTON
2007



SCAN TO LEARN
MORE ONLINE



SCAN TO VIEW
MAP & BROCHURE



Located within 8,000
acres of State Park

Pere Marquette Lodge & Conference Center



Dining Room & Winery Heated Pool Wedding & Event Venue

www.pmlodge.net

WEEKEND WARRIORS

Ready for a weekend escape? All roads lead to southwest Illinois – the perfect place to spend your days indulging in nature, sampling local cuisine and discovering a new take on nightlife fun. Here are a few ideas sure to make your weekend getaway memorable.

What will you find along the trails?

Plan your experience at
MCTtrails.org



MCTRAILS
Madison County Transit

MCTtrails.org | trails@mct.org | [f](#) [@](#)

ROUTE 66 ADVENTURE

ACTIVITIES

Take a road trip along The Last 100 Miles of Route 66 in southwest Illinois. It doesn't matter where you begin your journey – roadside stops and adventures line the highway which stretches from south of Springfield to just outside St. Louis. Be sure to stop by **The Pink Elephant Antique Mall** in Livingston, the **West End Service Station** in Edwardsville, and **It's Electric Neon Sign Park** in Granite City. Stroll through **Willoughby Heritage Farm** in Collinsville and see what life was like on a 1940's farm – complete with adorable animals eager for attention. **Cahokia Mounds** in Collinsville – a UNESCO World Heritage Site – brings the past to life with one of the few Native American mound cultures north of Mexico.

UNIQUE SITES

Take a walk across the Mississippi River on the classic **Chain of Rocks Bridge**. Once a major toll road linking Illinois to Missouri along Route 66, the bridge is now only open to bicyclists and pedestrians. The stunning views are worth the two mile round trip hike.

DINING

Local cooking shines along Route 66 which is overflowing with options for great food. Take your pick of roadside diners including the historic **Ariston Café** and **Jubelt's Bakery & Café**, both in Litchfield; **Decamp Station** and **Blackbird Bakery & Café**, both in Staunton; **Doc's Just Off 66** in Girard; **Route 66 Creamery in Hamel**; **Teri's Route 66 Dinner** and **Mr. Twist**, both in Granite City and **222 Artisan Bakery** in Edwardsville. That's just the tip of the dining iceberg.

NIGHTLIFE

Once a major highway for rum runners and bootleggers, Route 66 has hosted its fair share of Prohibition era celebrities. Channel those times with a visit to the **Route 66 Old-Fashioned Restaurant and Speakeasy** in Carlinville or **The Speakeasy** in downtown Granite City. The iconic **Wildey Theatre** in Edwardsville hosts national cover bands every weekend for concert fun. Stop by **Stagger Inn Again** in Edwardsville for live music and classic bar fun.

WHERE TO STAY

When it's time to call it a night, enjoy your zzz's at **Edwardsville's Urban Collective Boutique**. Or make your weekend a glamping experience with a stay at **Boonie's Farm** in Worden.



—== *Legendary!* ==— Fast Eddie's Bon Air

Cold Drinks. Hot Food. Live Music.

1530 E. 4th St., Alton, IL 62002
(618) 462-5532
Fasteddiesbonair.com

*Open Daily at 11AM. Must be 21 Years old.
We accept cash and credit/debit cards*





NATURE CALLS

ACTIVITIES

Scenic views dominate the landscape in southwest Illinois. Unplug and recharge with a visit to **Pere Marquette State Park** – the largest state park in Illinois. Take a trail ride through the park with **Pere Marquette Riding Stables**. Rent a bike – or bring your own – and ride along the more than 140 miles of paved trails on the nationally recognized **MCT Trail** system that winds through Edwardsville, Collinsville and Madison County. Pick up your binoculars and head to the **Audubon Center at Riverlands** for a birding adventure. Walk across the 80-foot tall **Melvin Price Locks and Dam** at the **National Great Rivers Museum** in Alton and see the mighty Mississippi River in action. Visit **Aerie's Resort** in Grafton for high flying fun and the Best Views in the Midwest.

NIGHTLIFE

End your day enjoying live music and cold drinks at **Fast Eddie's** in Alton – an iconic dive bar and standout entertainment center. **Argosy Casino** Alton sits on the Mississippi River offering gaming fun. **The Conservatory** in Alton is home to top-notch local musicians.

DINING

Delight your tastebuds with a meal at **Pere Marquette Lodge Restaurant** – known for its family-style fried chicken. Take a seat at **Southern Coastal Cuisine** or **Fountain Hills** in Grafton. Stop for a fresh fried fish sandwich at **O'Jan's Fish Stand** and **Beasley Fish**, both in Grafton. Alton is home to **Gentelin's** on Broadway, **Bluff City Grill**, **My Just Desserts**, **Brown Bag Bistro**, **Castelli's** and more.

WHERE TO STAY

Alton Cracker Factory offers boutique loft options and stunning views of the Mississippi River. Check in to **Pere Marquette Lodge**, **Tara Point Inn & Cabins** or **Aerie's Resort**, all in Grafton. **Green Tree Inn** in Elsah brings an elevated bed and breakfast experience.



Colman's COUNTRY CAMPERS

2 Fun Ln, Hartford, IL 62048

Phone: (618) 254-1180

www.colmanscampers.com



- SALES
- PARTS
- SERVICE

Adventure Starts on Fun Street!

CELEBRATING AMERICA'S

250th



Strike up the band and cue the celebrations. This summer, communities throughout southwest Illinois will celebrate America's 250th anniversary of its independence. Make plans to take part in these activities and events.

ALTON

Donut eating contests, balloon artists, music and food will highlight the activities over three full days of celebrations during the **250 on the Mississippi** fun in Alton.

Haskell Park will be home to old-fashioned fun on **Wednesday, July 1**. Events start at 1 p.m. with a celebratory cutting of an oversized birthday cake for the nation provided by **Duke Bakery** in Alton. There will also be an ice cream social, live music, activities for the kids and food and drink vendors. The celebration moves to Alton's **Rotary Park** on **Thursday, July 2** with live music, activities for the kids, a balloon artist and food and drink vendors. The celebration caps off with the annual **Alton Fireworks Spectacular** on **Friday, July 3** which takes place along the Alton Riverfront. Fireworks soar over the Mississippi River at dusk in a stunning light show display at this celebration.

EDWARDSVILLE

Four days of celebrations will take place in Edwardsville. Meet American revolutionaries Benjamin Franklin, Abigail Adams and more from 1 to 4 p.m., **Saturday, June 28** at **City Park**. These founders of America will talk about the Declaration of Independence. On **Tuesday, June 30**, the historic **Wilsey Theatre** will host a showing of the movie 1776. The fun continues on **Thursday, July 2** as the Edwardsville MUNY Band performs in City Park. Celebrations end with a bang on **Saturday, July 4** at the **American Legion** with the annual July 4th Fireworks. Speakers, food vendors and music will round out the afternoon and evening.

Wood River will host events at **Belk Park** on **Friday, July 3** including a drone show at dusk.

Enjoy the Ride with Timmy's Travels



Book your next pre-planned trip and explore the Midwest in comfort!

Locally owned and operated charter bus and transportation service serving southwest Illinois.

www.gowithtimmy.com or on Facebook
Call Tim directly at (217) 473-9321

Come find your fun!



EDWARDSVILLE

Restaurants • Festivals • Nightlife
Family Attractions • Concerts
Museums • History • Route 66
Parks • Biking & Trails • Sports

DESTINATION



EDWARDSVILLE



SHOP. EXPLORE. DINE.

JERSEYVILLE-IL.US

Stay connected



TheWedge

powered by SIUE



BUILT FOR COWORKING.
WIRED FOR CONNECTION.



FIND YOUR SPACE.

Reserve your favorite go-to space or try a new one. See you soon.

CHOOSE YOUR MEMBERSHIP.

Stay for a day. Pack for a week. Move in for a month. Flex workspace made easy.

STAY AS LONG AS YOU CHOOSE.

WHERE PURPOSE MEETS PLACE

The Wedge delivers spaces crafted to elevate creativity, amplify productivity, and cultivate real-world connection.

Plus... FREE COFFEE!!

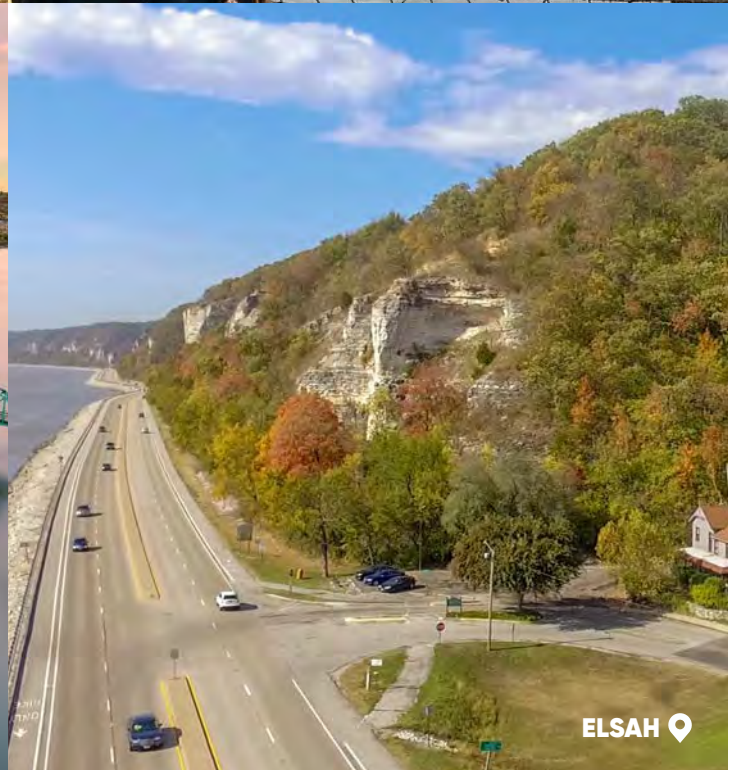
LOCATION

The Wedge
620 E Broadway
Alton, IL 62002
618-364-9600
Hours: M-F 9am-5pm

JOIN TODAY
thewedge.space

River Towns

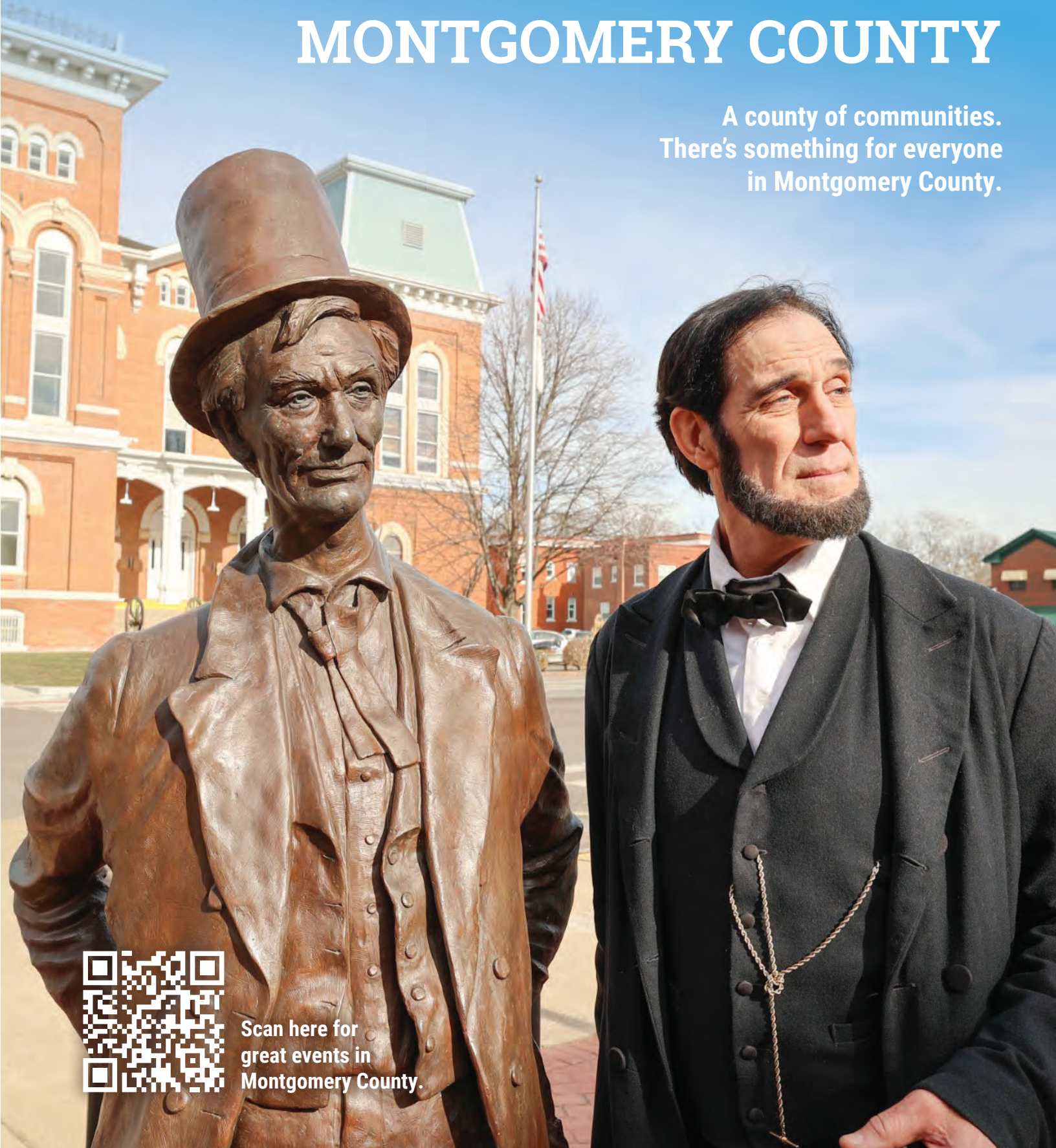
The mighty rivers that flow through southwest Illinois have colored the region with their character. Visit these riverside communities and discover a new getaway adventure.



DISCOVER

MONTGOMERY COUNTY

A county of communities.
There's something for everyone
in Montgomery County.



Scan here for
great events in
Montgomery County.

JAZZ GREAT MILES DAVIS
TURNS 100

-STONE

VISIONARY. MUSICIAN. COMPOSER. INNOVATOR.

Those are just a few words used to describe jazz great Miles Dewey Davis III who turns 100-years-old in May.

Born in Alton in 1926 and raised in nearby East St. Louis, Davis died in 1991 but left a lasting impact on southwest Illinois and the world. Several local events and activities are planned to honor the iconic musician.

The 21st Miles Davis Jazz Festival will take place on **May 23** at the Post Commons in Alton. The festival will mark his 100th birthday with an evening of jazz music. The jazz festival was established to continue Davis' legacy of music and creativity.

Celebrate the life of Davis at his childhood home, 1701 Kansas Ave., East St. Louis. Now called the **House of Miles EstL**, Davis' home is a community center and museum celebrating Davis' impact on the world of Jazz. In honor of his 100th birthday, The House of Miles is collecting stories about Miles Davis and the Davis family to share with the community.

Davis left his mark on the music world and is credited with reinventing jazz and influencing rock, funk and hip-hop as well as global culture.

Davis' legacy is commemorated in his birth city of Alton with a life-sized bronze statue, one of only three in the world (one in France and one in Poland). The statue was sculpted by artist Preston Jackson, a lifelong fan of Davis. The statue depicts a 30-year-old Davis lost in song on his trumpet. This statue is located in the city's entertainment district on Third Street. Nearby, a massive mural featuring Davis on his trumpet lights shines on a brick wall. The mural is painted in shades of blue, in honor of his world-famous Kind of Blue album.



COME TO THE LITCHFIELD PICKERS MARKET



LEARN MORE



Discover vintage, antiques & collectibles all made prior to 1985.

MAY - OCTOBER

Second Sunday of every month
Downtown Litchfield | 8am - 2pm

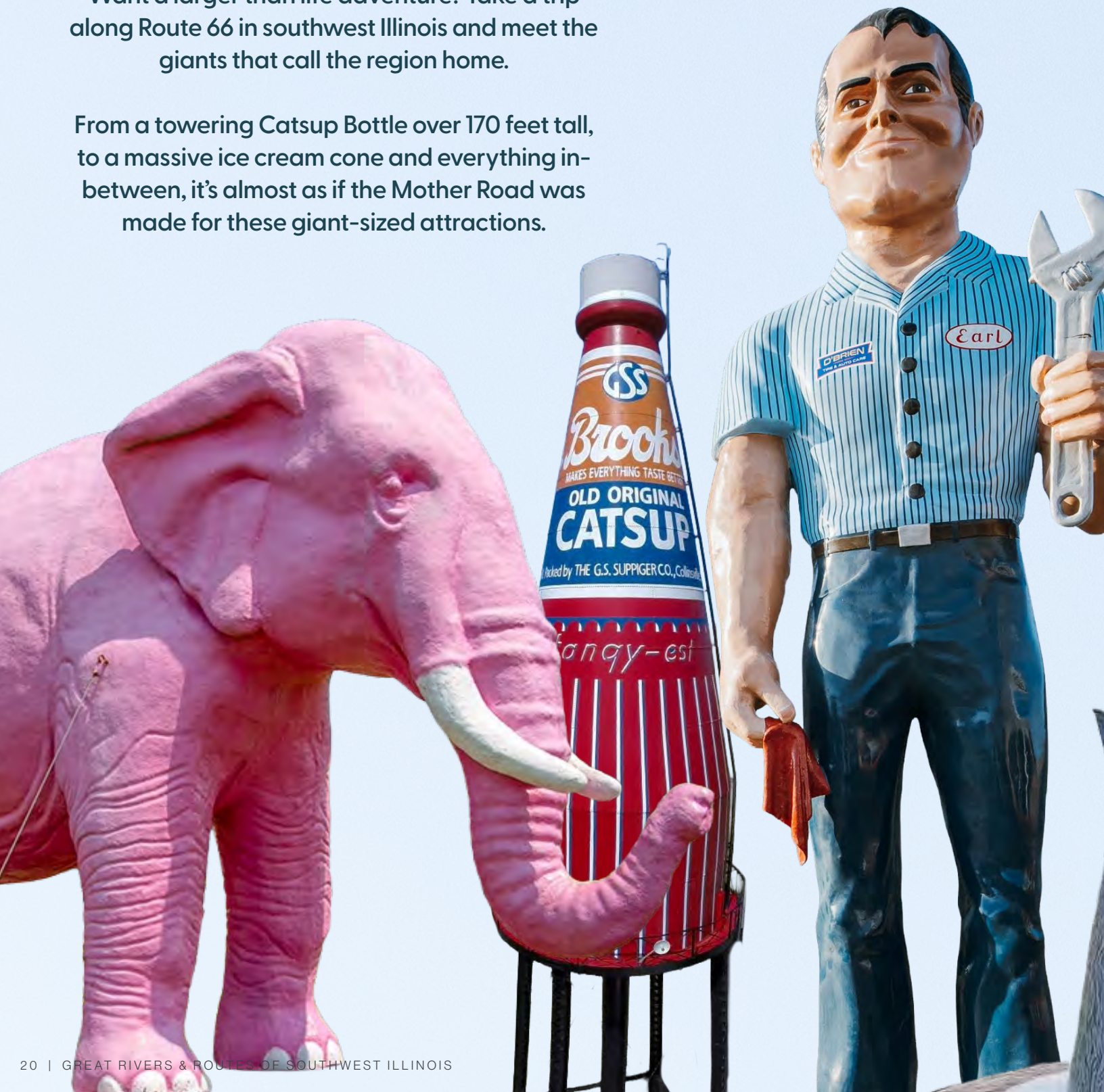
Litchfield
ILLINOIS 

GIANT-SIZED ADVENTURES

Want a larger than life adventure? Take a trip along Route 66 in southwest Illinois and meet the giants that call the region home.

From a towering Catsup Bottle over 170 feet tall, to a massive ice cream cone and everything in-between, it's almost as if the Mother Road was made for these giant-sized attractions.

A pink elephant, an alien spaceship, a giant ice cream cone and a variety of fiberglass giants greet visitors to the **Pink Elephant Antique Mall** in Livingston. The Route 66 attraction is known for its 20-foot tall pink elephant that stands out in the landscape.



An oversized Alvin and the Chipmunks and a growling T-Rex greet visitors who enter the, of course, enormous antique mall housed inside a historic and renovated school building. The building housing the antique mall is also celebrating its 100th birthday this year! Anchoring the antique mall is the eclectic **Twistee Treat Diner** with a giant-sized exterior ice cream cone announcing its presence. See these giants at 908 *Veteran's Memorial Dr., Livingston.*

Fiberglass giants have found a home in Granite City, once a major Route 66 hub. The **It's Electric Neon Sign Park** is home to ghost neon signs, but also a few new giant-sized attractions including a 16-foot tall **Graniteware Coffee Pot** and an equally impressive 16-foot tall **Makit Toy**. Granite City was once famous for manufacturing Graniteware cookware and is considered the birthplace of the Makit Toy in 1937, which is similar to the Tinkertoy. Find the It's Electric Neon Sign Park at 19th Street and Delmar Ave.

Not far from It's Electric Neon Sign Park in downtown Granite City stands the

20-foot tall Fork, as in **Fork in the Road**. See this at 1901 *Cleveland Blvd.* Standing tall beside **O'Brien Tire and Auto Care** in Granite City, is a 14-foot **Earl the Muffler Man**. The giant statue is a nod to O'Brien's longevity along Route 66. It is considered the longest operating tire and auto service center on Route 66. It opened 20 years before the advent of Route 66 and is still operating today. O'Briens and Earl are located at 3924 *Nameoki Rd.*

Greeting residents and visitors to Granite City's Lincoln Place neighborhood stands the 20-foot tall

Rusty the Muffler Man. The giant is a tribute to the city's blue-collar workers. He wears a hard hat, carries a sledgehammer and a lunchbox with Made in America emblazoned on its front sits beside him. This giant is located at 614 *Niedringhaus Ave.*

Looming tall – in fact the tallest giant of them all – is the **Brooks Catsup Bottle Water Tower** in Collinsville. This catsup bottle shaped tower is 70-feet tall standing on a 100-foot tall tower. It towers over Collinsville along Route 66 and was once the formal water tower for the adjacent Brooks Catsup Plant. The tower was eventually saved from demolition by a group of community supporters who raised funds to refurbish and paint the tower, bringing it back to its 20th Century Americana glory. The tower is considered the **World's Largest Catsup Bottle Water Tower**. It is located at 800 *S. Morrison Ave. in Collinsville.*





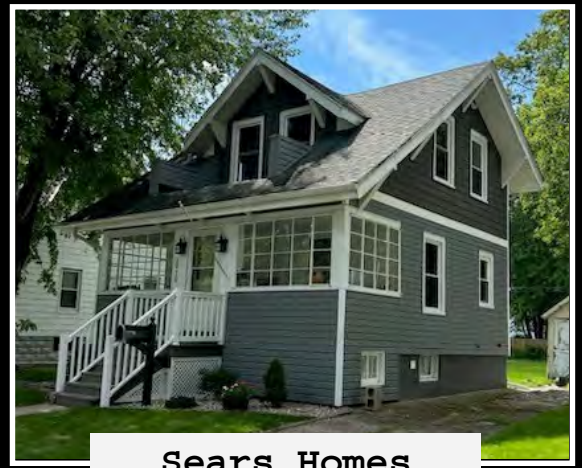
GRANITE CITY

Land of legends.

granitecity.illinois.gov



Historical Society



Sears Homes



Cannonball Jail

Timeless by design
Carlinville

Stroll beneath ornate Victorian architecture, follow the path of America's most famous highway, and experience a town shaped by craftsmanship, creativity, and pride of place.

Visit the iconic **Anderson Mansion**, the grand **Macoupin County Courthouse**, and the legendary **Cannonball Jail**. Wander the historic **City Square**, home to the *first and only original roundabouts on Route 66*. Step into living history among the classic **Sears & Roebuck kit homes** the largest continuous collection in the world.

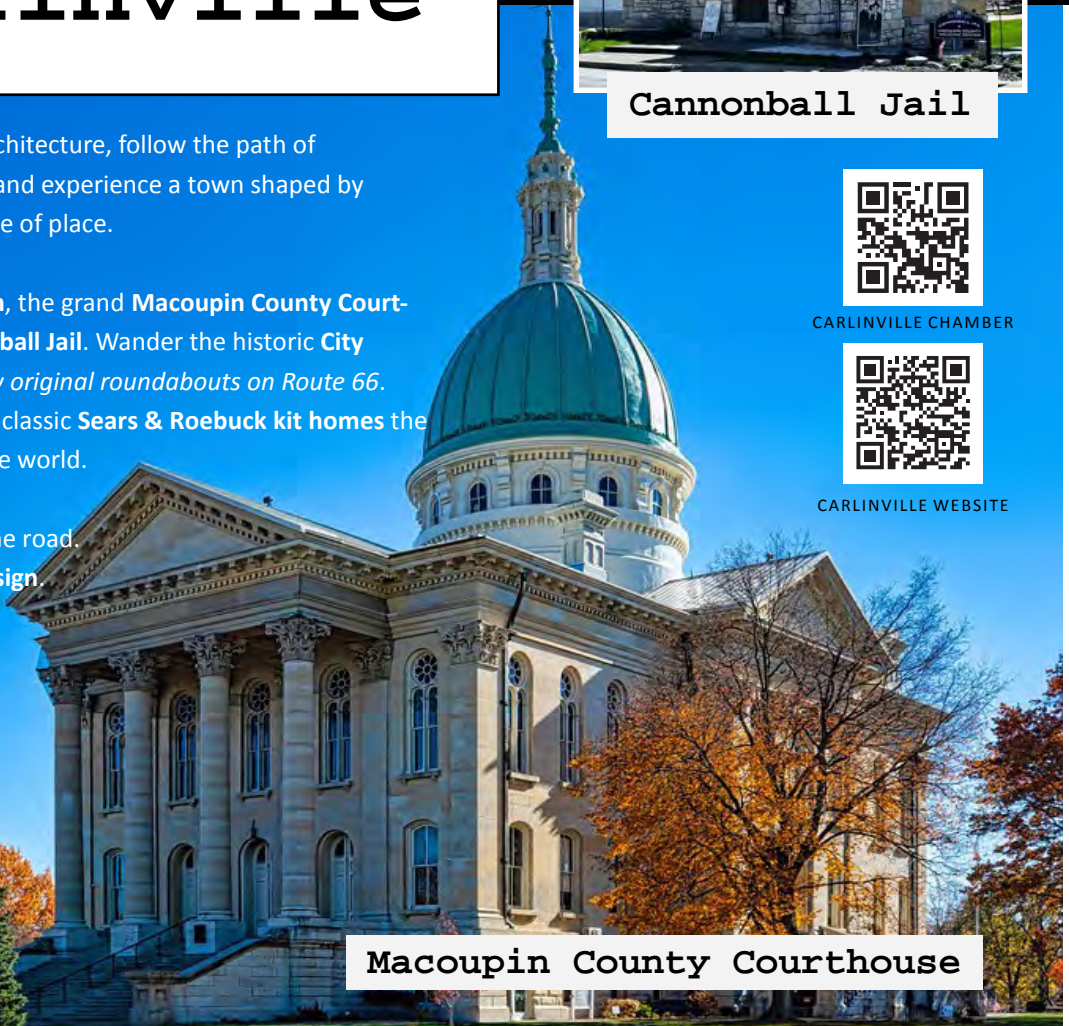
Carlinville isn't just a stop along the road.
It's a destination—**timeless by design**.



CARLINVILLE CHAMBER



CARLINVILLE WEBSITE



Macoupin County Courthouse



Coming Soon!

NATIONAL MEMORIAL OF MILITARY ASCENT

950 E. Main St., Grafton

A new memorial honoring military veterans will greet visitors to Grafton. A striking, life-sized World War II reproduction of U.S. Army rangers climbing the limestone bluffs at Omaha Beach on D Day has been recreated on the limestone bluffs facing the Mississippi River in Grafton.



LEWIS & CLARK CONFLUENCE TOWER

435 Confluence Tower Dr., Hartford

This 185-foot high structure at the confluence of the Mississippi and Missouri rivers has had a facelift creating a new visitor experience.



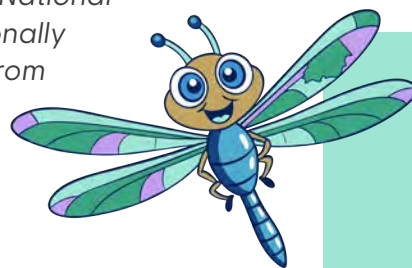
BYWAY DISCOVERIES

New attractions are popping up along the Meeting of the Great Rivers National Scenic Byway. This 33-mile nationally recognized highway stretches from Hartford to north of Grafton and is part of the Great River Road. Explore the two new and one improved sites sure to enhance experiences along the banks of the Mississippi River.

BYWAY DISCOVERY CENTER AT GREAT RIVERS PARK

10815 Lockhaven Rd., Godfrey

A new visitor experience debuts on the Great River Road with a 4,500-square-foot state-of-the-art center. The Byway Discovery Center includes an exhibit space, gift shop and lecture facilities.



MEET RIVER RAE THE DRAGONFLY

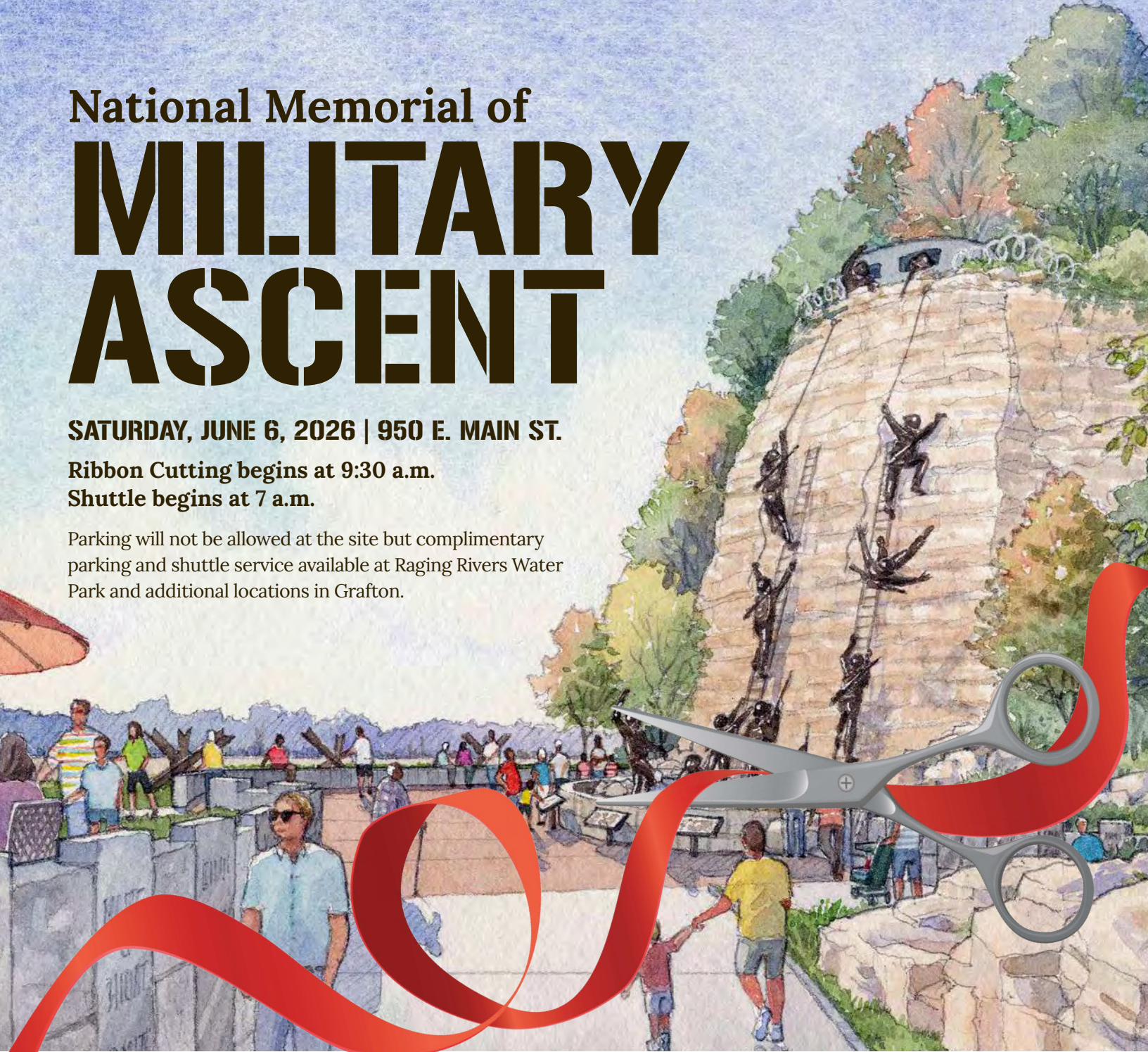
River Rae was born where the great rivers come together – along the bluffs, floodplains and riverbanks of the Meeting of the Great Rivers National Scenic Byway. From the air, Rae learned to see how the great rivers shaped the land, support wildlife and sustain the communities that depend on them.

National Memorial of **MILITARY ASCENT**

SATURDAY, JUNE 6, 2026 | 950 E. MAIN ST.

**Ribbon Cutting begins at 9:30 a.m.
Shuttle begins at 7 a.m.**

Parking will not be allowed at the site but complimentary parking and shuttle service available at Raging Rivers Water Park and additional locations in Grafton.



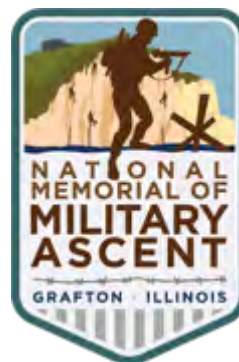
D-DAY NMMA CELEBRATION DINNER & DANCE **YOU DON'T WANT TO MISS THIS! PURCHASE TICKETS NOW!**

June 6, 2026 at 5PM | The Loading Dock, Grafton

Get ready to celebrate with friends and family as we come together to honor our veterans and give gratitude to all the individuals who have supported the National Memorial of Military Ascent project.

Enjoy a fabulous meal, music by Elsie Parker and The Poor People of Paris will perform with The Michael Buerk Orchestra to follow.

1940's period attire is encouraged.



**SCAN HERE TO
LEARN MORE**

It's time to visit
STAUNTON



Discover more



Bask in the small town charm of Staunton, IL, located along the Last 100 Miles of Route 66 in southwest Illinois. Enjoy great dining, shopping and a variety of local events including the annual Tour de Donut, Staunton Balloon Glow, Ribfest, Cruise In Art Fest and so much more.



Macoupin County

HISTORIC. SCENIC. MAGICAL.



Nestled along the Last 100 Miles of Route 66 in Illinois, discover Macoupin County where Americana, Route 66 and history come together for a fun travel experience. Visit the historic communities of Carlinville, Virden, Girard, Gillespie, Mt. Olive, Staunton, Benld and Bunker Hill. Enjoy outdoor recreation at its finest at state and local parks; revisit history at the Macoupin County Courthouse and nearby Cannonball Jail; experience the thrill of a drive along Route 66 in Illinois. Plan a weekend of fun in Macoupin County.



SCAN HERE
TO LEARN MORE



Sunny delights

Summer in southwest Illinois is full of sunshine and water park fun. Pack up the towels and sunscreen and plan a weekday or weekend of fun at regional adventure parks where swimming, splashing and simple pleasures take center stage.



TRAVEL TIP

Be on the look-out for special events at the park including the Ultimate Foam Party. Dance to the beat as giant foam cannons blast waves of bubbly, soapy fun creating a high-energy, music-filled experience the entire crew will enjoy.

Raging Rivers Water Park, Grafton

When the temps start to rise, Raging Rivers in Grafton is the perfect place to cool off. This water adventure park sits on the banks of the Mississippi River and offers a variety of interactive water fun. Fly down the Mississippi Monster slide or relax on the Lazy River. The littles can splash around in Itty Bitty Surf City.

Be on the look-out for a new ride experience: The Kraken. Private cabanas are available to rent. Food and drinks are also available.



Coming Soon to Raging Rivers – Riverland Resort, a new RV park experience, is under construction and will create a one-of-a-kind resort destination overlooking the mighty Mississippi. Also, **the Lumber Jacks Family Entertainment Center** – a new and enhanced spot for fun at the park – is being finalized with plans for an amphitheater and themed mini golf attraction.

Collinsville Aqua Park

Take your summer fun in the sun experience to the next level at the Collinsville Aqua Park. With a Lazy River, leisure pool, Monsoon Mountain and a lap pool, among other water-centric amenities, the park is the perfect spot for a day trip or weekend adventure.

Soak in the sun with a float in the Lazy River which includes a figure-eight pattern pool. The inner tubes and tandem tubes are free-to-use. Let the kids try out the Aqua Climb Wall, lily pads and the seven thrilling water slides. There's free parking and no charge for life jackets.

TRAVEL TIP

Book a weekend stay at one of the nearby hotels for a water park themed vacation.



Splash Pads

Looking for water-based fun for toddlers and young children? Splash pads have popped up in communities across southwest Illinois.

01 ALTON SPLASH PAD

Located in Riverfront Park, this themed pad has multiple water features showcasing Alton's landmarks and icons including a riverboat and American Bald Eagle. A snack bar and restroom facilities are available.

02 LEON CORLEW PARK AND SPLASH PAD

333 S. MAIN ST., EDWARDSVILLE

The fun ranges from gentle bubblers to a large dumping bucket. Done with water fun? The park itself offers a toddler playground and larger child sized play area.

03 AND MORE

Check out the **Bethalto Splash Pad**, the **Jerseyville Splash Pad** and the **Glazebrook Park Splash Pad** to round out a day of water focused activities.

ESCAPE TO ELSAH

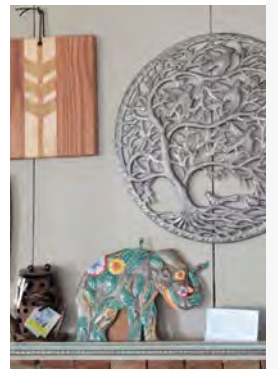


DINE



EXPLORE

SHOP



STAY



VISIT [ESCAPETOELSAH.COM](https://www.escapetoelsah.com)

SAVOR

THE HOUR



Unwind. Relax.
And raise a glass
to Happy Hour in
southwest Illinois.
After all, it's 5 p.m.
somewhere.

HAPPY HOUR APPS

BLUFF CITY GRILL, ALTON

Guac Bites - green-tinted won ton wraps filled with fresh, mildly spicy guacamole.

1818 CHOPHOUSE, EDWARDSVILLE

Goat Cheese Stuffed Bacon Wrapped Dates

BRICK & BRAMBLE, EDWARDSVILLE

Classy Hour Parmesan Fries

MCDILLS IRISH PUB, COLLINSVILLE

Wings soaked in the sauce of the day

SUMMER DRINKS

BAKERS & HALE, GODFREY

Key Lime Martini

OPERA HOUSE BREWING COMPANY, HILLSBORO

Gin Cocktail with fruit and herbal juice

TONY'S BAR & STEAKHOUSE, ALTON

Belvedere Bees Knees

CLEVELAND HEATH, EDWARDSVILLE

Espresso Martini

NARWHALS CRAFTED, EDWARDSVILLE

Frozen Cocktails

Sh



#1 STEAKHOUSE IN SOUTHERN ILLINOIS



PREMIERE DINING
INNOVATIVE COCKTAILS
SPECIAL OCCASIONS
OUTDOOR COURTYARD & PATIO
LIVE ENTERTAINMENT

1818chophouse.com | 618-307-9300 | info@1818chophouse.com | Reservations Strongly Encouraged | Closed Mondays



Shhhh – be very quiet and make sure you know the secret code to gain access to the regions best kept secret bars and taverns. Great drinks, food and a genuine Prohibition-era vibe fills these southwest Illinois speakeasys – hidden in plain view.

THE SPEAKEASY

1318 Niedringhouse Ave., Granite City

ROUTE 66 OLD-FASHIONED RESTAURANT AND SPEAKEASY

366 South Side Square, Carlinville



BLUFF CITY GRILL
RESTAURANT | BAR | BANQUET

Book your next special event and banquet in the newly remodeled banquet hall.

424 E. Broadway | Alton, IL • 618-433-8288 • bluffcitygrillalton.com



Baseball? Softball?
Pickleball? Plummer
Family Park has it all.



TEE TIME

Spend a day at Park North Golf Club, adjacent to Plummer Family Park, for the perfect family golf adventure. This state-of-the-art facility is a popular sports entertainment center with an 18-hole putting course and 40 Trackman-powered bays. Open seven days a week.



Cheer on your favorite youth or adult athletic teams this summer when they take the field at the state-of-the-art Plummer Family Park in Edwardsville. When it comes to hosting youth and adult sporting events, this facility is second to none.

The 83-acre park sits on the eastern edge of the city and offers a variety of playing surfaces which are perfect for youth and adult league play. Plummer is home to eight lighted, full turf fields that can host all levels of

softball and baseball play. There are also three lighted all-weather synthetic multi-purpose and three grass fields that are perfect playing surfaces for soccer, lacrosse, field hockey, flag football and disc events.

Grab your pickleball paddle and partner for a game on one of the park's 24 pickleball courts. There's also a championship court for those who want to step up their game. The courts are available for casual, open play or tournaments. Tip: Reservations



NEW FACILITY

Keep your eyes peeled for a new indoor recreational field house at Plummer Family Park. The facility will include five high school regulation-size basketball courts that can transition in to nine volleyball courts. There will also be facilities available for futsal and athletic training. The Courthouse 618 is anticipated to open in fall of 2026.

are suggested for those who want a specific date and time. Reserve your playing time here:
www.Plummer.PicklePlanner.com

Feel the sand between your toes when you hit the new Beach Volleyball Courts at the park. There are six NCAA and AVP regulation beach courts along with leagues for adults and youths. The beach vibe continues at the tiki hut concession stand adjacent to the courts.



YEARS OF GENEROSITY

FOUNDATION

**SOUTHERN ILLINOIS UNIVERSITY
 EDWARDSVILLE®**

Celebrating 50 years of shared impact.

The SIUE Foundation proudly thanks our generous supporters who have transformed lives and opened doors to opportunity for generations.

- Turning dreams into degrees with over 700 life-changing, donor-funded scholarships.
- Sparking creativity and discovery through donor-sponsored, cutting-edge facilities.
- Strengthening regional prosperity, with 60% of alumni choosing to live and lead within 60 miles.



SCAN OR VISIT

siue.edu/give
siuefoundation@siue.edu
 618.650.2345



*Play.
Dine. Win.*

Argosy Casino Alton is your place to play and win!

With over 500 of the latest slots, 9 table games, Alton's only Sportsbook, and Hops House Bar & Grill, odds are you're in for the time of your life!

ARGOSY
CASINO ALTON
A PENN Play Destination

Must be 21. If you or someone you know has a gambling problem, crisis counseling and referral services can be accessed by calling 1-800-GAMBLER (1-800-426-2537).


www.argosyalton.com

**PINK ELEPHANT
ANTIQUE MALL**

ALL UNDER ONE ROOF. OPEN 7 DAYS A WEEK

Home to The Twistee Treat Diner,
Mother Road Fudge-n-Candy Shop,
Area 66 Haunted School



908 Veterans Memorial Dr., Livingston, IL 62058
PINKELEPHANTANTIQUEMALL.COM

Find us on Facebook.
Search our events for Route 66 Centennial Celebrations throughout the year!



Scan here for more fun

FESTIVAL SEASON IS CALLING



Color your summer vacation adventures with a splash of festivals, fireworks and fairs taking place in southwest Illinois.

APRIL

- 19 **Mushroom Hunt and Morel Mushroom Festival**
Pere Marquette Lodge & Conference Center, Grafton
Go on the hunt for the perfect morel mushroom or just celebrate this famous fungi.

MAY

- 09 **Sip Sample Stroll**
Downtown Grafton
Shopping extravaganza featuring food, drinks and retail specials.
- 12-17 **Grafton Bike Week**
Grafton
Six full days of adrenaline, chrome, and BBQ on the Mississippi
- 24 **Memorial Day Firework Festival**
Collinsville Aqua Park & Eastport Plaza, Collinsville
Kick off your summer with free fireworks.
- 28 **Grafton Music in the Park**
The Grove Memorial Park, Grafton
Free concerts every Thursday for 18 weeks.
- 30 **Alton Pub Crawl**
Downtown Alton
You and your furry friends are invited to this fun event that spans many pet-friendly patios and shops in Downtown Alton.

JUNE

- 2-6 **Macoupin County Fair**
Carlinville
There's harness racing, a tractor pull, Demolition Derby at this annual county fair. Get tickets for headliner Aaron Lewis & The Stateliners taking the stage June 4.
- 5-6 **International Horseradish Festival**
Uptown Collinsville, Collinsville
Celebrate the pungent root with horseradish-infused food, drinks and more.
- 06 **Two Rivers Family Fishing Fair**
Pere Marquette State Park, Grafton
Cast a line in this free family-friendly event.
- 06 **West End Service Station Birthday Party**
West End Service Station, Edwardsville
Mark the anniversary of this Route 66 icon.

- 07 **All Wheels Drive-In Car Show**
Downtown Alton
Alton's 29th annual car show held on 3rd, State and Belle Streets in historic Downtown Alton.

JULY

- 05 **Grafton Fireworks**
Grafton Riverfront
The skies over the confluence of the Mississippi and Illinois rivers are filled with fireworks during this annual celebration.
- 14-19 **Jersey County Fair**
Jerseyville Fairgrounds
Enjoy a good, old-fashioned county fair that includes a queen pageant, livestock, tractor pulls and a carnival.
- 17-19 **F1 Powerboat Alton Midwest National Championship Boat Race**
Alton Riverfront
Rooster tail alert! Watch powerboats race on the Mississippi River in Alton during this celebrated Midwest tradition.
- 11 **Tour de Donut Bicycle Race**
Staunton
Ride for donuts on the 34-mile race or the 12-mile easy ride option.
- 21-26 **Madison County Fair**
Highland
Six days of family fun and nonstop entertainment.

AUGUST

- 1-6 **Old Settlers Days of Hillsboro**
Hillsboro
Old fashioned country fair, car show, parade, carnival and more.
- 08 **Mississippi River Water Trail Firecracker Race**
Paddlers race 15 miles down the Mississippi River from Grafton to Alton.
- 08 **Rock the Hops**
Downtown Alton
Music, art and craft beverages are on tap during this annual festival.
- 8-17 **Staunton Illinois Balloon Glow**
Staunton
Hot air balloons light up the night sky in Staunton.
- 16 **Edwardsville Rotary Criterium**
Downtown Edwardsville
Enjoy high speed bicycle races on Edwardsville's city streets during this day long event.



Treasure TROVE



Go on a treasure hunt in southwest Illinois and uncover some of the best local shopping spots in the region. There's a reason the locals consider them true hidden gems.

Strangelovely

Find more treasures here





Olive Oil Marketplace



Grafton Limestone



Cactus Hand Goods

STRANGELOVELY

Broadway, 210 E. Broadway, Alton

Take your time and browse through the ever-evolving collection of vintage home goods and clothing.

OLIVE OIL MARKETPLACE

108 W. 3rd St., Alton

This gourmet market is a staple for locals who crave fresh ground coffee, flavored oils, balsamics, seasonings and rubs. Fill your basket with handmade pastas, sauces, loose teas and more.

COLLECTED BOUTIQUE

122 East Side Square, Carlinville

Style-up your home with finds from this shop that specializes in home décor with personality. Find your next treasure among the architectural salvage, wicker baskets, textiles and more.

DIZZY DUGOUT

31 E. Main St., Collinsville

Looking for collector's editions, collective cards, and comics? This is your place.

SOCAL SOUL

301 N. Main St., Edwardsville

Plants, home décor, gifts, jewelry, gardening tools and more are sure to brighten your shopping experience.

THE ROOTED HOME

516 Elevator St., Farmersville

Find decorative pillows, light fixtures and seasonal decorations. There's also a selection of locally made skin care, bath bombs and candles.

BIN 51 WINE & SPIRITS

118 N. Main St., Edwardsville

Who says you can't spend time shopping for wine and spirits? Bin 51 offers the ultimate wine experience with a large selection of both. When you're done shopping, take a seat and sip a glass of wine on site.

CACTUS HAND GOODS

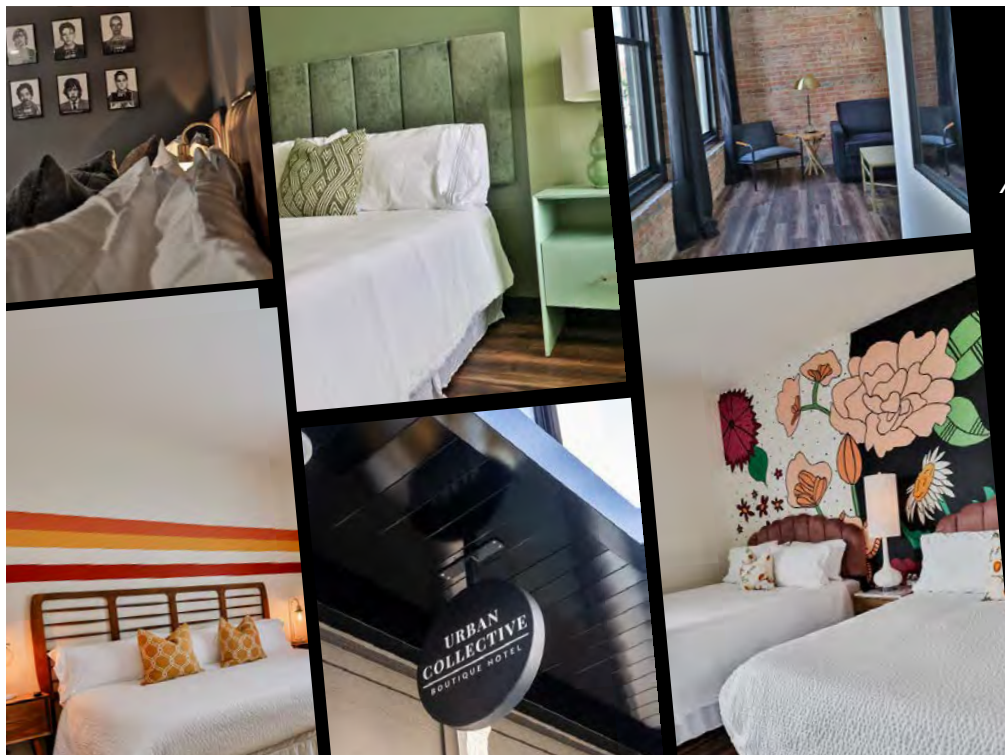
309 S. Main, Hillsboro

Pick up a locally inspired T-Shirt, or choose from the fun and ever evolving inventory of men's wear, coffee table books, camping gear and more.

GRAFTON LIMESTONE

300 E. Main St., Grafton

Gift shop with home décor, locally sourced artisan goods, mercantile kitchen supplies and more.



URBAN COLLECTIVE
BOUTIQUE HOTEL

A unique stay on Route 66

- Downtown restaurants, bars, and shops
- The iconic Route 66 attractions
- City Park, home of the Route 66 Festival and the Edwardsville Art Fair
- Southern Illinois University Edwardsville (SIUE)
- The Ink House event venue

www.urbancollectivehotel.com



Bishop Spring Lavender



Mississippi Mud Pottery



MADE HERE

There's no shortage of artisans and creators in southwest Illinois.

Hand thrown pottery. Roasted coffee beans. Wine bottled using locally harvested grapes. Hand-made soaps and scrubs. Local hard woods hand-milled into stunning furniture. What do these products all have in common? They are lovingly crafted and grown in the Great Rivers region of southwest Illinois.

Stop by these locally owned, operated and creative businesses on your next trip to southwest Illinois and take home a sampling of these one-of-a-kind products.

The artists at **Mississippi Mud Pottery** use the nearby Mississippi River as their muse. Located in the river community of Alton, each piece of pottery is imagined, then hand thrown and glazed by the small team of artisans on site. Take your pick of coffee mugs, plates, bowls, chip and dip bowls, casserole dishes and so much more. Oven, dishwasher, microwave and food safe. Mississippi Mud Pottery has been recognized by the State of Illinois as an Illinois Maker.

For 75 years, **Duke Bakery** in Alton has crafted classic bakery treats and is beloved by locals. In honor of its anniversary, the bakery is serving up another treat – Duke Beverages bottled sodas. Pick up a locally crafted glass bottled soda featuring iconic flavors like Dukola (cola), Old Fashioned Root Beer, Cream, Orange and more. Stop by Duke's Granite City location which is celebrating its 20th anniversary and indulge your sweet tooth.



Grafton Winery

Drive down the Meeting of the Great Rivers National Scenic Byway to Grafton and meet the makers of the award-winning **Grafton Winery** wines. The vintners have been bottling their own blends of wine since 2008 and winning awards ever since. Wines are available at the downtown **Grafton Winery & Brewhaus** and at the **Grafton Winery The Vineyards** which overlooks acres of locally grown grapes used to craft a variety of wines including Vignoles, Vidal Blanc, and Cabernet Sauvignon among others. Pick up a bottle of their fruit wines including Apple Crisp, Blackberry and Raspberry Kiss.

David Stine, the maker behind **David Stine Furniture**, is a nationally-recognized craftsman who followed his dream – chucking his livelihood as an attorney and returning to his native southwest Illinois where he began making furniture using wood from his family's 500-wooded-acres in Dow. His work is featured



David Stine



Fuddle Duddle Coffee

in St. Louis area restaurants and he creates residential furniture by commission one piece at a time.

Purple blossoms fill the landscape at the region's two lavender farms which are open seasonally for U-Pick and lavender fragrant products. Visit **Tenderloin Lavender Farm** in Edwardsville and walk the fields of this family-owned farm filled with the fragrance of lavender. Pick your own lavender or pick up lavender scented products in the adjacent barn-turned-shop. Lovers of lavender can also visit **Bishop Spring Lavender Farm** in Hillview located in scenic Greene County. The farm sells its own lavender products including hair serum, lavender mist oils, balms and more. Harvest your own fresh lavender bundle during U-Pick Days.

Ahhh – the smell of freshly roasted coffee. The makers at **Idle Roasting**, **Maeva's Coffee** and **Fuddle Duddle Coffee**, all in Alton along with **Plaid Roasters** and **Goshen Coffee** in Edwardsville bring their A-game to the coffee bean roasting process. Idle Roasting, located inside **The Post Commons**, roasts small batches to ensure quality and flavor. New to the roasting scene, Fuddle Duddle Coffee, housed at **Old Bakery Beer Co.**, roasts organically grown, single origin coffees. Enjoy a cup, take home a pound of Fuddle Duddle coffee and shop the cool merch. Be sure to visit **Roasterz** in Wood River for more coffee treats.



WHERE THE MOTHER ROAD *Meets the River Road*





EXPERIENCE EXHILARATING.

One destination. Double the thrill. Two worlds collide at Fairmount Park Casino + Racing, where the speed of live thoroughbred racing and the electric energy of casino play combine for one unforgettable experience. From the roar of the track to the glow of the gaming floor, every visit promises anticipation, atmosphere, and pure exhilaration.



**FAIRMOUNT
PARK**
CASINO + RACING

*A Winning Experience,
From Start to Finish*

Endless fun awaits at the only racino in the region.

CASINO

Modern gaming meets nonstop excitement.

LIVE HORSE RACING

Family-friendly racing, Tuesdays & Saturdays, April to October.

LONGSHOTS

Elevated food & drinks with front-row views of the action.



GOLDEN EAGLE FERRY

TAKE A SCENIC FERRY RIDE ACROSS THE MIGHTY MISSISSIPPI RIVER BETWEEN HISTORIC ST. CHARLES, MISSOURI & BEAUTIFUL CALHOUN COUNTY, ILLINOIS

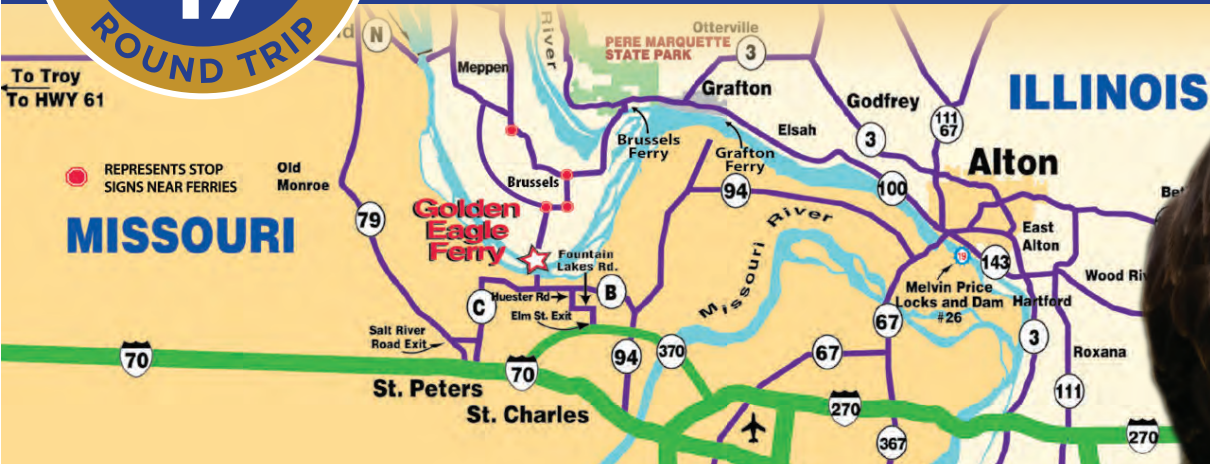
Visit Calhoun County year-round for a fascinating journey through the historic and quaint communities, hiking trails, restaurants, roadside stands and orchards that make up the countryside. And it all starts with a ferry ride!



Mon - Thurs • 5am - 9pm
Fri - Sat • 5am - 2am
Sunday • 8am - 9pm

Open Holidays • 8am - 9pm
75 Ton Load Limit

Find us on Facebook



For more info call
(618)535-5759
or visit
CalhounFerryCompany.com



For more info on
visiting Calhoun
County go to
CalhounIL.org



For info on the
Grafton Ferry visit
TheGraftonFerry.com
or call **(618)465-6676**

