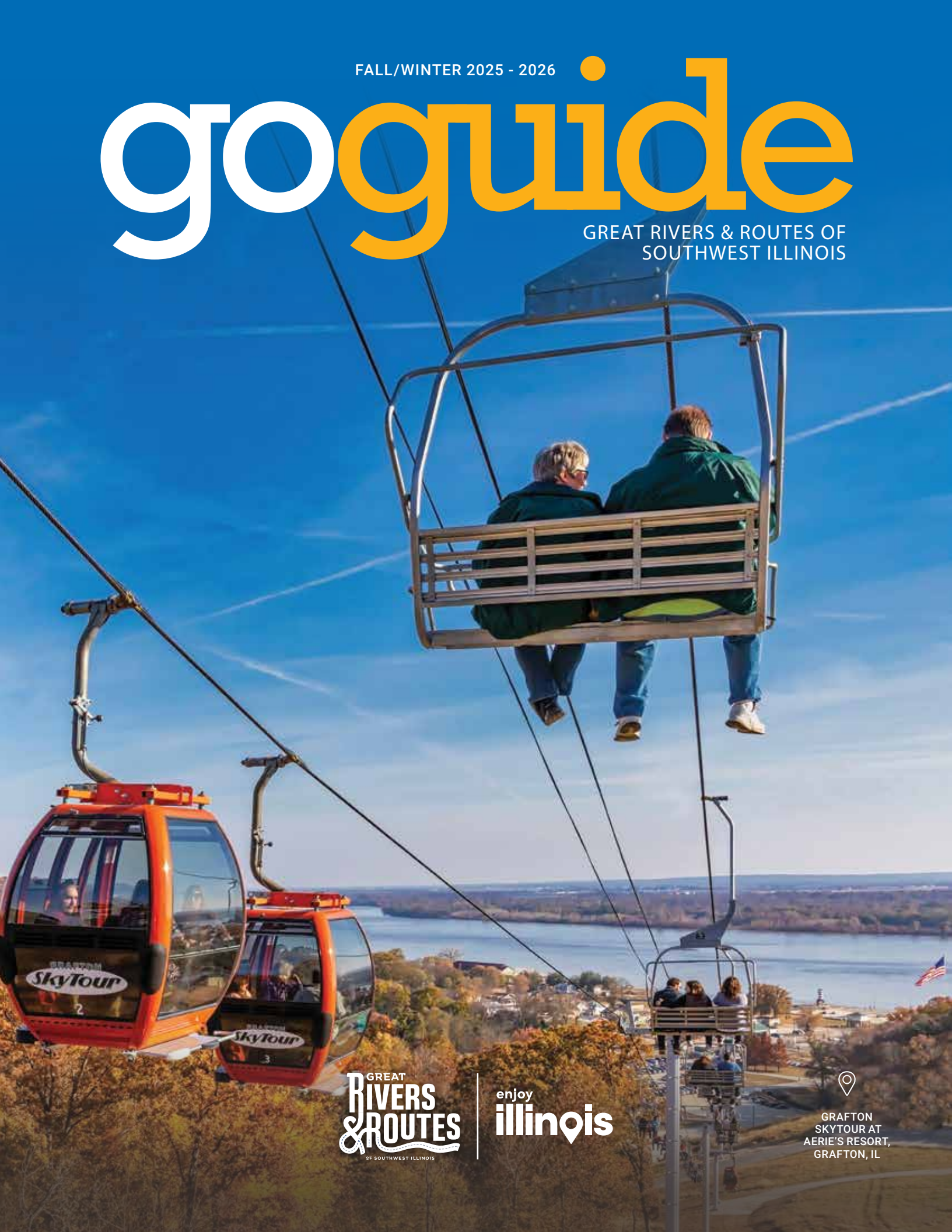


FALL/WINTER 2025 - 2026

go guide

GREAT RIVERS & ROUTES OF
SOUTHWEST ILLINOIS



GREAT
**RIVERS
& ROUTES**
OF SOUTHWEST ILLINOIS

enjoy
illinois



GRAFTON
SKYTUR AT
AERIE'S RESORT,
GRAFTON, IL

YOUR Adventure BEGINS HERE!



SKYTUR • ADVENTURE TOURS • ALPINE COASTER • RESTAURANT • LODGING



Aerie's is located on a bluff overlooking the confluence of the Mississippi and Illinois Rivers above downtown Grafton, Illinois providing a stunning view that captivates any visitor. **BRING A FRIEND, OR YOUR FAMILY, WE HAVE A BUNCH IN STORE FOR YOU!**



Aerie's Adventure Tours are Here! – Explore the Aerie's bluffs on a UTV for a memorable journey.

45 minutes from downtown St. Louis MO & Lambert International Airport
On the Scenic Byway in Grafton, IL

AERIE'S
RESORT

(618)786-8439
aeriesresort.com



contents

FALL/WINTER 2025 - 26

- 02 INTO THE WOODS
- 06 RV WORLD
- 10 GIRLS FALL GETAWAY
- 16 LAND OF GIANTS
- 20 FALL WITH THE LOCALS
- 26 WINTER BIRDS
- 30 MURALS OF SOUTHWEST ILLINOIS
- 32 SAVORY SWEETS

PHOTOGRAPHERS:

Scott Evers, Marty McKay,
Larry the Photographer,
Shift Agency, Emily Paul of
Blackbird Bakery, Park North
Golf Club, Midwest Nomad
Family, Mark Ahlvers. Fall Pickin'
illustration by Manuel Herrera.



PERE MARQUETTE
STATE PARK,
GRAFTON, IL

facebook.com/RiversandRoutes Instagram.com/RiversandRoutes YouTube.com/RiversandRoutes

The Best View in the Midwest



Into **THE WOODS**

Ever wanted to lose yourself in nature? Take a trip to southwest Illinois – the only place in America where the Mother Road of Route 66 meets the Great River Road and prepare for an immersive experience with fabulous fall colors, stunning scenic views and natural wonders that will leave you breathless.

Head into the woods of southwest Illinois for a one-of-a-kind adventure.

Take a walk in the woods of southwest Illinois



WATERSHED
NATURE CENTER,
EDWARDSVILLE, IL

Take a walk in the woods of southwest Illinois and let go of the pressures and demands of daily life. The region is home to three majestic state parks along with multiple wooded recreation, nature and wildlife centers – all perfect locations for a getaway experience.



LAKE LOU
YAEGER,
LITCHFIELD, IL

Rediscover your inner peace at ...

- Pere Marquette State Park –**
 The largest of Illinois' state parks with over 8,000 acres of woodlands nestled alongside the Illinois River is just north of Grafton along the Great River Road. Offering a variety of activities from rock climbing, to hiking, fishing and scenic drives, the park is a visitor favorite. Spend the night at the iconic Lodge or in a rustic cabin or pitch a tent at the on-site campgrounds.
- Horseshoe Lake State Park –**
 This scenic park is located just outside Collinsville not far from the Mississippi River. It's the perfect place for fall fishing, picnicking, hiking and even has public duck blinds for waterfowl hunting in season. Tent camping is available.
- Beaver Dam State Park –**
 The smallest of the region's parks, Beaver Dam is a favorite for fishing hiking and tent and trailer camping.
- Lake Lou Yaeger –**
 Litchfield, along Route 66, is home to this recreational gem which features a 1,400-acre lake ideal for boating, swimming and fishing and a surrounding recreation area offering hiking, biking, equestrian trails, campgrounds and a public swim beach.



THE NATURE
INSTITUTE,
GODFREY, IL



SCAN HERE
FOR MORE
OUTDOOR
FUN

- Watershed Nature Center –**
 Discover nature nestled inside the city at this Edwardsville gem. With more than 40 acres of prairie, forest and wetland habitats, it offers hiking, and a great place to see local wildlife.
- The Nature Institute –**
 Take your pick of hiking trails at this environmentally protected site located on the bluffs overlooking the Mississippi River in Godfrey. The trails are open through November for public access.



A RIDE IN THE WOODS

Saddle up and explore the woods in southwest Illinois on horseback. The **Pere Marquette Riding Stables** has fall trail rides through the park showing off the stunning fall colors alongside glimpses of natural wildlife. These 45-minute adventures take riders off the beaten path for a colorful view of nature at its best.

If riding through the woods on two wheels is more enticing, hop on a bike and explore the more than 150 miles of **MCT Trails** that wind through Madison County. The trails are part of the rolling landscape showcasing rivers, creeks, woodlands and natural prairie. These Class 1 bikeways feature 48 bridges, 22 tunnels and a few at-grade crossings.



RV world

Picture yourself sitting beside a campfire – the snap and pop of burning wood and dancing flames flooding your senses with the scent of fall. Night skies arch overhead full of sparkling stars. The call of crickets and frogs echo throughout the night air.

This is outdoor camping at its best.



SCAN
HERE FOR
MORE
CAMPING
LOCATIONS

If an outdoor escape is on your fall bucket list, then consider hooking up the RV and take a camping getaway to southwest Illinois. Here are some notable camping destinations:

Pere Marquette State Park Park Rd. • Grafton

80 Reservable Class A sites with electrical hookups. All Class A sites have 20, 30 and 50 amp service. Two Class A sites are handicap accessible. Sanitary dump station, drinking water and shower building available on the grounds. Firewood can be purchased in Spots 1 & 2. Firewood from outside Jersey County is not allowed.

Lake Lou Yaeger Campground 3 Primitive Ln. • Litchfield

Nestled in a wooded area is the 18-site Bicentennial RV Campground with access to Lake Lou Yaeger which is one half mile away. Utility hookups and bath houses. One site is handicap accessible.

Lazy Days Campground 22756 Whitepark Ln. • Litchfield

With 140 campsites for RVs and trailer camping, this Route 66 site is a great way to explore the Mother Road and enjoy nature. 50 amp hookups, pull through sites, water hookups, and more amenities available.

Rustic Acres Jellystone Park 12246 Binney Rd. • New Douglas

Located just off Route 66, this family-friendly RV park offers a swimming pool, jumping pillow, laser tag and more. Take your pick of VIP Campsites, Pull Thru Sites, Lake Front Sites, Full Hook Up Sites, and Water and Electric Sites.



Beaver Dam State Park 14548 Beaver Dam Ln. • Plainview

RV camping is available at this rural Carlinville state park with 40 reservable campsites. Each site has electricity. There is a shower building with rest rooms located in the center of the RV camping area. A sanitary dump station is also available.

Sherwood Forest Campground 920 City Lake Rd. • Hillsboro

Escape to Hillsboro and plan at stay at this cozy campground. 16-short term RV camp sites are available. Amenities include electrical and water hookups, shower house and a dump station.

FIND YOUR LINCOLN STORY

Over 250 Lincoln sites across
43 counties waiting to be discovered!



A MEMBER OF THE
**National Heritage
Area System**



For a full listing of Lincoln sites, programs, and events, visit www.lookingforlincoln.org

CHASING FALL COLORS

Vibrant reds. Brilliant yellows. Warm oranges. The *colors of fall bloom across the trees* in the Great Rivers & Routes region of southwest Illinois every year starting in October and, if nature stays true to course, peaking in early November.

There's nothing like a drive along the Meeting of the Great Rivers National Scenic Byway between Alton and Grafton to *drink in the colors of fall*. It's considered one of the best fall color drive experiences in the U.S. after all!

Experience fall along the mighty Mississippi in these *charming river cities* and discover the best places to see the sights.



EARLY OCTOBER
COLORS BEGIN
CHANGING



MID OCTOBER
NOTICEABLE
CHANGE



EARLY NOVEMBER
PEAK COLORS

Alton

Great fall colors blossom in this Mississippi River city which spans the river bottoms and hilly river bluffs. Some of the best places to bathe in the colors include **Riverview Park** perched over 300 feet above the Mississippi River. While taking in the fall colors, relax at **FLOCK Food Truck Park** or **Old Bakery Beer** and enjoy a seasonal beverage. Stop in at **My Just Desserts** for a bowl of soup, or sandwich and a piece of pie.

Elsah

Stroll through the streets of this historic river city nestled between the mighty river bluffs. The tree-lined streets create the perfect backdrop for scenic fall selfie photos in front of classic churches, homes and the iconic **Elsah Museum**. Be sure to stop in at **Peace Works – A Market with a Mission** and enjoy a meal and the atmosphere at **State Street Market on LaSalle**.



Grafton

There's plenty to see and do in Grafton any time of the year, but fall color viewing is one of the most highly anticipated. Take a **Mississippi River Fall Colors Cruise** aboard the **Hakuna Matata** excursion boat to see the fall colors from a different perspective. Soar up the river bluffs on the **Grafton SkyTour** to **Aerie's Resort** for what has been called "The Best Views in the Midwest" for color viewing and entertaining fun. Take a **Grafton Adventure Tour** through the bluffs on UTVs for an up-close look at the changing colors.

TRAVEL TIP

Book a Fall Foliage & History Tour – a four hour journey through Grafton and Elsau showcasing the spectacular fall colors and local history. Tickets are available at: **RiversandRoutes.com**

ESCAPE TO
ELSAH

STAY

DINE

EXPLORE
SHOP



VISIT [ESCAPETOELSAH.COM](https://www.escapetoelsah.com)



ALTON CRACKER
FACTORY,
DOWNTOWN, ALTON

FALL GET AWAY FOR THE GIRLS

COCKTAIL SIPPING, SPA
PAMPERING, EPIC DINING,
CLASSIC SHOPPING...
What's better than a fun
weekend adventure with
your friends? Gather the
crew and pack your bags.
Here are some ideas for a
fall getaway just for the girls!

OUTDOOR FUN

Nothing but air

- Spend time outside exploring the region. Rent a bike in Alton or Glen Carbon and take to the open trails; travel the river by boat with a cruise on board the **Hakuna Matata** sailing out of **Grafton Harbor**. Rent a kayak from a **Kayak Kiosks** and paddle the Mississippi on your own.

SPA DAY

Relaxing retreats

- Pamper yourselves at a local spa. Spend the day at **EXO Nail Bar, Med Spa and Lounge** in Edwardsville or relax with a massage at **Bodies Kneaded** in Granite City or **Fitness for the Soul** in Alton.

SHOPPING

Shop local. Shop small.

- Stroll through local downtown districts and drop in on these locally owned and operated businesses including **Olive Oil Marketplace, Alton; Keepsake Candle Company, Edwardsville; and Lou Belle & Bing, Collinsville** – just for starters.



WANT MORE
IDEAS FOR YOUR
WEEKEND
OF FUN?
SCAN HERE



STRANGELOVELY,
ALTON, IL



EXO LOUNGE,
EDWARDSVILLE, IL

LOCAL FLAVORS

Foodie and craft beverage
connoisseurs take note

Explore the foodie scene in southwest Illinois and discover new takes on classic faves.

- Weekends were made for casual dining and great sandwiches. Put **Brown Bag Bistro** in Alton at the top of your list.
- Relax by the confluence of the Illinois and Mississippi Rivers at the newly opened **Southern Coastal Cuisine** in Grafton. A Tiki Cabana overlooks the rivers providing the perfect atmosphere for a casual dining experience.
- Ready for dinner? Enjoy a taste of Italian cuisine at **Mio Osteria** in Edwardsville or classic Americana at **Cleveland-Heath** in downtown Edwardsville. **Gentelin's on Broadway** in Alton serves up elegant and classic three course meals.

HAPPY HOUR

It's 5 o'clock somewhere

- Sip a glass of wine or a slushie beside the confluence of the Mississippi and Illinois Rivers at **The Loading Dock** in Grafton. **Grafton Winery The Vineyards** for a glass of locally produced wine. For a spirited happy hour, visit **Old Herald Brewery & Distillery** in Uptown Collinsville, **FLOCK Food Truck Park** in downtown Alton or **Brick & Bramble** in Edwardsville.

AFTER HOURS

Fun after dark

- Not ready to call it a night? Enjoy some casino fun at **Argosy Casino Alton**. Enjoy eclectic and alternative live music at **The Conservatory** in downtown Alton. The drinks are cold, the food is hot and the music is amazing at **Fast Eddie's Bon Air**, a world famous dive bar located in downtown Alton.

WHERE TO STAY

Book your getaway stay at a local boutique hotel or bed and breakfast inn for the ultimate girlfriend experience!

- **Alton Cracker Factory – Great Rivers Lodging** has stunning views of the Mississippi River in Alton. Each loft has an apartment-like feel and the Eagle's Nest penthouse is great for a large group.
- **Urban Collective Boutique Hotel**, Edwardsville, is nestled in the city's downtown but you wouldn't know it. The hotel features eight distinct suites each with its own ambiance, and theme.
- **Green Tree Inn Bed & Breakfast** in Elsah is a getaway like no other. Guests are treated to home cooked breakfast and afternoon treats. All rooms have private bath and there is a screened in porch and backyard fire pit for guests.
- **Pere Marquette Lodge & Conference Center** in Grafton has guest rooms and rustic cabins available for overnight stays.

#1 STEAKHOUSE IN SOUTHERN ILLINOIS

PREMIERE DINING
INNOVATIVE COCKTAILS
SPECIAL OCCASIONS
OUTDOOR COURTYARD & PATIO
LIVE ENTERTAINMENT

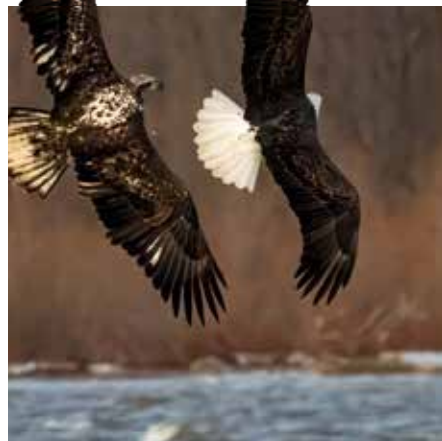
1818chophouse.com 618-307-9300 | info@1818chophouse.com | Reservations Strongly Encouraged | Closed Mondays

— Legendary! — Fast Eddie's Bon Air

Cold Drinks. Hot Food. Live Music.

1530 E. 4th St., Alton, IL 62002
(618) 462-5532
Fasteddiesbonair.com

Open Daily at 11AM. Must be 21 Years old.
We accept cash and credit/debit cards



Get Lost IN GRAFTON

A real American river town.



WWW.ENJOYGRAFTON.COM



WWW.GRAFTONILCHAMBER.COM

DISCOVER MONTGOMERY COUNTY

A county of communities.
There's something for everyone
in Montgomery County.



Scan here for great events
in Montgomery County.

LAND OF GIANTS ON *Route 66*

Welcome to the Land of Giants! Standing tall along the Last 100 Miles of Route 66 in southwest Illinois, massive statues and structures, unique to the Mother Road, greet visitors showcasing the quirky charm that can only be found along this famous highway.

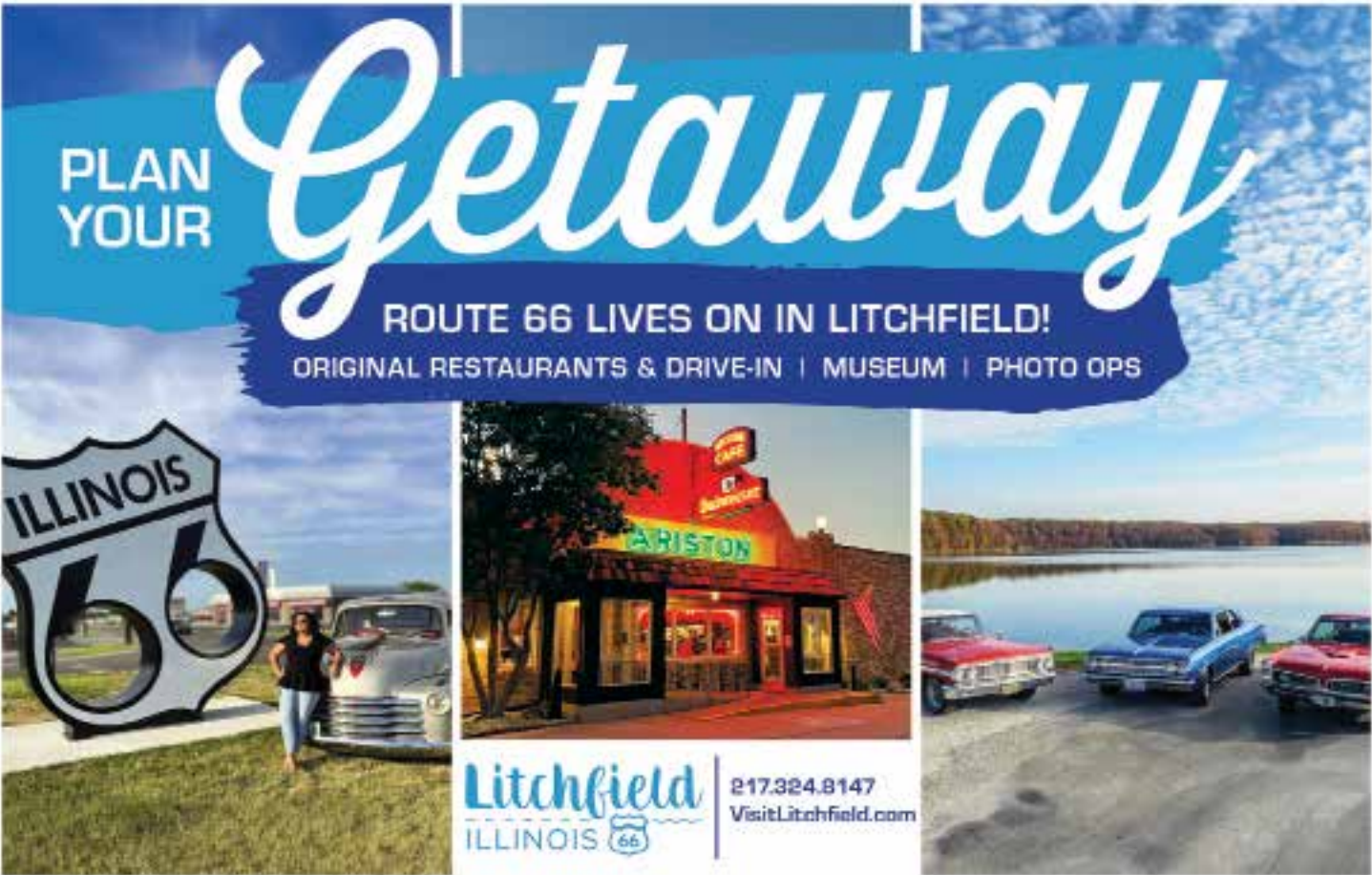


The **World's Largest Catsup Bottle Water Tower** stands tall in Collinsville. Soaring 170-feet above the city, the landmark is a great example of roadside Americana and attracts photo seekers on a daily basis.

CATSUP BOTTLE WATER TOWER, COLLINSVILLE, IL

MEET OUR GIANTS!

- 1** Visitors to the **Pink Elephant Antique Mall** in Livingston are welcomed by, what else, a giant pink elephant.
- 2** **Meet Earl!** This 14-foot tall Mechanic Muffler Man stands outside O'Brien Tire and Auto Care along Route 66 in Granite City. Earl welcomes visitors to the oldest and longest running tire and auto repair center in the U.S. along the Mother Road!
- 3** **Here's Rusty, the Muffler Man** who stands 20-feet tall on the south side of Granite City at the entrance to Lincoln Place neighborhood. He provides a tip of his hard hat to the city's blue collar steel workers.
- 4** A new addition to the **It's Electric Neon Sign Park** in downtown Granite City is a giant-sized replica of Graniteware which was developed in this city.



DISCOVER

Carlinville

Small town magic meets rich historic charm.

ILLINOIS

Built with heart. Inspired by history. Driven by community.

Stroll through unique shops and dine at one-of-a-kind restaurants on the Historic Square and beyond. Explore the World's largest continuous collection of Sears & Roebuck catalog homes, with 152 homes within a 9-block radius.

Take a scenic drive along Historic Route 66, and don't forget to snap a selfie with the iconic Million-Dollar-Courthouse.

Life in Carlinville feels like stepping into a postcard... and trust us, you'll want to stay a while!

*Amtrak
Destination*

CARLINVILLE
CHAMBER

CARLINVILLE
WEBSITE

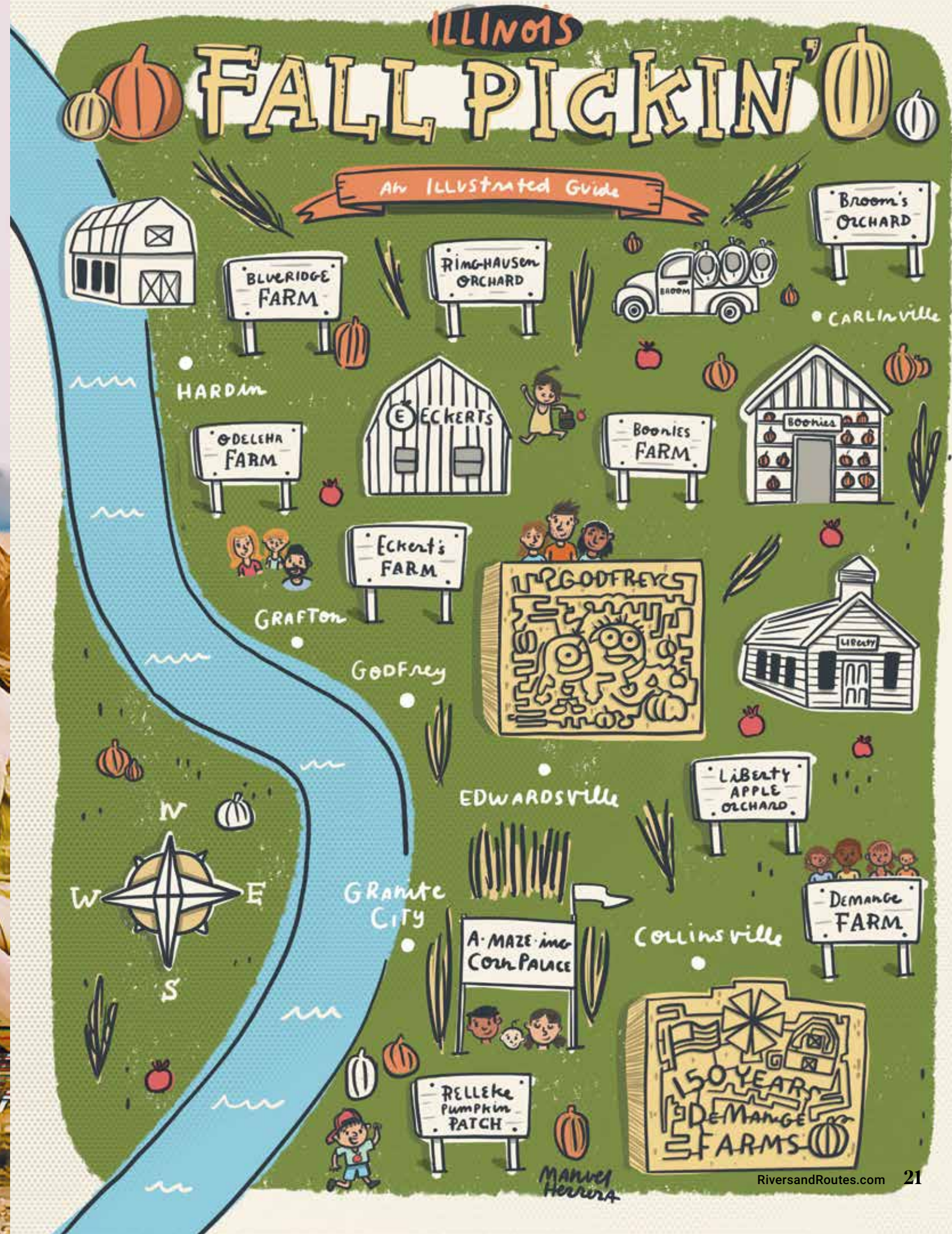
18 GREAT RIVERS & ROUTES Fall/Winter 2025 - 26

Illinois
ARTS
Council

Fall with the Locals

Simple pleasures come to life in southwest Illinois each fall. Picking a ripe juicy apple. Finding the perfect pumpkin. Getting lost in a corn maze. Taking a wagon ride with the kids.

When the crisp air of Autumn filters through the Great Rivers & Routes region, make plans to enjoy the season with the locals at U Pick orchards and farms, roadside produce stands and local festivals filled with family-friendly fun.



Fall means fun in southwest Illinois!

There's nothing like walking through an orchard – row after row of trees overflowing with red and yellow fruit – then reaching up into the heavily laden branches to pick the perfect apple. Take a bite and savor the sweet flavor and you can't wait to fill your basket with more! There are several U Pick orchards in southwest Illinois that offer up apple picking experiences from September through October. Pick a peck here: **Broom Orchard in Carlinville, Liberty Apple Orchard in Edwardsville, Mills Apple Farm in Marine, and Eckert's Orchard in Grafton.**

On the hunt for the Great Pumpkin? Look no further than these pumpkin farms which offer up a delightful variety of pumpkins: **DeMange Pumpkin Patch in St. Jacob, Relleke Pumpkin Farm in Granite City, Rinkel Pumpkin Farm in Glen Carbon, Eckert's Orchard in Grafton, Boonie's Farm in Worden, Greene Fields Farm in Greenfield, and Broom Orchard in Carlinville.**

Family fun is high on the list of activities each fall in southwest Illinois. Take the kids to Godfrey for the annual **Corn Fest on Sept. 27** and then get lost with the Minions in the nearby **Great Godfrey Maze**. The maze is cut into a different theme each year and this year features the Minions. In October, enjoy a haunted maze experience in the evenings. The **DeMange Corn Maze** is one of the largest in the state and full of fun adventures. The 15-acre maze is a challenge for all ages. Enjoy the surrounding pumpkin patch, take a hay ride or enjoy an evening bonfire. **Boonies Farm** in Worden offers fun activities for the kids including a pumpkin cannon, hay wagon rides, a jumping pillow and giant hillside slide. **Greene Fields Farm** is a true working farm and great place to enjoy fall activities – both educational and fun.



SCAN
HERE FOR
MORE
FALL FUN



GRANITE CITY

Land of legends.

granitecity.illinois.gov

RiversandRoutes.com 23



TAKE THE KIDS TO BETHALTO

for the annual **Bethalto Christmas Village**. This free event is held in the city park and features Santa and Mrs. Claus, lighted trees, holiday-themed glass cottages and more. Opens the day after Thanksgiving and runs every weekend up to Christmas. Don't miss the **annual Jerseyville Country Christmas and Bright Lights** events starting the weekend after Thanksgiving.



3

2

CALLING ALL SANTAS

to the Mississippi River city of Grafton! On Saturday, Dec. 13, put on your red suit, beard and hat and join your fellow Santas for **Santacon** – a classic holiday pub crawl through the city. Food and drink specials are on tap plus a group photo to commemorate the day takes place at 6 p.m. at The Loading Dock.



1

TRAVEL THROUGH ALTON'S ROCK SPRING PARK

and let the sparkling light show of **Christmas Wonderland** enchant. This drive through light display is popular with all ages and includes a stop at Santa's Village for photos with Santa and voting on the best decorated tree. Suggested donation of \$10 per car. Nov. 28 – Dec. 28

CLOCKWISE FROM TOP FLOCK FOOD TRUCK PARK, ALTON • JERSERVILLE • HOLIDAY CONCERT, EDWARDSVILLE

4

READY TO EXPERIENCE SMALL TOWN HOLIDAY DELIGHTS?

Join the Alton **Christmas Tree Lighting** even at Lincoln Douglas Square in early November to get a head start on the season. Visit Nokomis for the annual **Snokomis**. Collinsville kicks off the season with its annual **Light Up Parade and Christmas at the D.D. Collins** house in December.



8 DISTINCT ROOMS

In the heart of downtown Edwardsville, Illinois

urbancollectivehotel.com

URBAN COLLECTIVE

BOULIQUE HOTEL

BOOK NOW



SHOP. EXPLORE. DINE.

JERSEYVILLE-IL.US

Stay connected



SCAN HERE FOR MORE HOLIDAY INSPIRATION



TAKE *Flight*

When the winds of winter sweep across the great rivers of southwest Illinois, they also bring some welcome visitors.

From late December through early March, hundreds of American Bald Eagles call the region home enjoying the relatively warm waters and abundant food found in the waterways. They are joined by thousands of elegant Trumpeter Swans, geese, and ducks along with the occasional Snowy Owl which also retreat to the region during the winter months.

Flock to southwest Illinois this winter and discover the birds of winter in the wild.

Eagle Watching Shuttle Tours

Go on the lookout for live eagles in the wild during a two-hour eagle watching shuttle tour.

Tours will be available every **Saturday from Jan. 3 through Feb. 14 from 10 a.m. to Noon.** Tickets are \$22.50 per person.

The guided tours will highlight eagle watching hotspots throughout the Alton region and will hone in on a resident eagle nest for great photo opportunities. This is a chance to see eagles in their natural habitat perched in trees along the Mississippi River, diving into the river to catch fish and floating down the river on ice floes.



SCAN
HERE TO
PURCHASE
TICKETS

Eagle Meet & Greet

Spend some time up close and personal with a live American Bald Eagle and learn all about this majestic bird during a series of free Eagle Meet and Greet events. All activities take place from 10 a.m. to 2 p.m.

Saturday, Jan. 3
FLOCK Food Truck Park,
210 Ridge St., Alton

Saturday, Jan. 10
Grafton Visitor Center,
950 E. Main St.

Saturday, Jan. 17
Alton Visitor Center,
200 Piasa St.

Saturday, Feb. 7
Grafton Visitor Center,
950 E. Main St.

Winter Festivals

Fill your weekends with festival fun. Plan now to attend the **Bald Eagle Festival and Bird Show** at the **Pere Marquette Lodge & Conference Center** in Grafton on **Jan. 18**. The free event includes a bald eagle meet and greet, local vendors, food, drinks and more.

The **National Great Rivers Museum and Melvin Price Locks and Dam** hosts its annual **Ice Jam at the Dam** in

mid-February. This family-friendly event features live birds, kids activities and water safety instructions.

Take your bird watching to the next level at the **Audubon Center at Riverlands** during the annual **Bald Eagle Days** celebration. Held each year in **early February** activities include live bald eagle programs, eagle viewing through spotting scopes and more.

Bald Eagle Days at Pere Marquette

Take a free day-long journey through **Pere Marquette State Park** and the surrounding Illinois River valley to view American Bald Eagles in the wild.

Tour dates include: **Dec. 26, Jan. 30, Feb. 2, 3, 4, 18, 19, 20, 25, 26, 27 and March 6.** Reservations are required by calling; 618-786-3323 ext. 1

Alton Eagle Ice Festival

Jan. 2 & Jan. 3, Downtown Alton
Free to attend

It's all about the eagles during this two-day festival which is considered the official kick-off to Eagle Season in southwest Illinois.

Friday, Jan. 2 gather at **FLOCK Food Truck Park** from 5 p.m. to 11 p.m. for an exciting live ice carving competition, live music, food, drinks and fire pit fun. Eagle-themed food and drinks will be served up.

Saturday, Jan. 3 the fun starts at 10 a.m. and runs through 2 p.m. at **FLOCK Food Truck Park**. A live American Bald Eagle will be on hand for a meet and greet throughout the event. There will also be live ice carving demonstrations. Enjoy s'mores over the fire pits and take your pick of food from on-site food trucks. Drinks will also be available.

Explore Alton during the event and stop by **Old Bakery Beer** for the Eagle Fest vendors market. Events are also planned at the nearby **National Great Rivers Museum** and the **Audubon Center at Riverlands**, located across the Mississippi River from Alton.



TRUMPETER SWANS
AT AUDUBON CENTER
AT RIVERLANDS



NATIONAL
GREAT
RIVERS
MUSEUM

National Great Rivers Museum – the Home of Riverbend Water Safety!

Open Daily 9AM- 5PM | Dam Tours at 10AM, 1PM, 3PM

2 Lock and Dam Way, East Alton, Illinois 62024

(618) 462-6979 | www.MTRF.org | [@GreatRivers](https://www.facebook.com/GreatRivers)



US Army Corps
of Engineers
St. Louis District

New Swing on Fun

A new level of sporting fun has landed in Edwardsville.

Park North Golf Club brings cutting edge golf technology to the region with more than 40 TrackMan-powered driving range bays, an 18-hole championship putting course, sports bar and covered patio entertainment area.

The new facility, which opened in the summer of 2025, provides a family-friendly facility that welcomes all skill levels.

This fresh take on golf entertainment includes various TrackMan games perfect for competing with friends or playing with the kids. Yard games are available in the Covered Patio experience which features outdoor TVs for game viewing a full bar service and garage doors that roll up for fresh air – weather permitting.

Scotty's Sports Bar is also housed at the facility led by Head Chef Scott Oglesby, who has created a locally-inspired food menu, along with expertly crafted cocktails and drinks. Appetizers and drinks can also be delivered directly to driving range bays.

Park North Golf Club is open seven days a week with extended hours on weekends.



MURALS *of* SOUTHWEST ILLINOIS

MURAL ART HAS FOUND A NEW HOME IN THE REGION.
Create a mural journey through the region and discover the stories these vibrant works of art tell.

They are painted on age-old brick walls and ancient limestone bluffs. The murals of southwest Illinois offer a peek in to the past and showcase the present with each brush of color. Here are just a few must-see works of art:



PIASA BIRD at Piasa Park, Alton. This artist rendering, high on the limestone river bluffs overlooking the Mississippi River, brings the mythical half bird, half dragon to life. First noted in the writings of explorers Pere Marquette and Joliet in 1673, the Piasa Bird became part of Native American lore.

ALTON FLYWAY, Landmarks Boulevard, Alton. Soaring on the brick wall of the Mississippi Landing building, birds take flight in the middle of the Mississippi Flyway – nature’s birding superhighway. The birds represent the area’s natural beauty and bio-diversity.

ROUTE 66 MURAL in Downtown Edwardsville. Travelers along the Mother Road journeyed westward through the city often stopping to refuel, dine and stay the night. The city’s postcard mural is one of 12 individualized murals along the Last 100 Miles of Route 66 in Illinois.

COLLINSVILLE MURALS, Uptown Collinsville. This Route 66 city is home to four classic and colorful murals representing its past and showcasing its present vitality. Check out the Route 66 Postcard Mural on the Verona Coffee building, the Uptown Mural welcoming visitors to the shopping district and the new Collinsville Route 66 mural with its quirky and quaint art.

ROUTE 66 STAUNTON MURAL, at Blackbird Bakery, Staunton. With a tip of the hat to classic Route 66 Americana, this colorful mural blends into the bricks of its host building and is part of the new Route 66 Park in Staunton.

ARTISTIC ADVENTURES

Take a look at the artists that make up the creative communities in southwest Illinois. Some of their work is on display at area art galleries and studios.

Macoupon Art Collective

115 E. Main, Staunton, IL

Explore your inner artist at this walk-in studio which also hosts community events including markets, galleries and makers meet and greets. Drop-in classes and single-day classes are held which accommodates visitors who want to create their own masterpiece.

Edwardsville Arts Center

340 Montclair Ave., Edwardsville, IL

This vibrant arts community features local artists at satellite galleries through a collaboration with local businesses. The Edwardsville Arts Center hosts the annual three day open air Art Fair at City Park each September. Classes are also available for adults and children.

Jacoby Arts Center

208 State St., Alton, IL

A pillar of the Alton community for over 20 years, this artistic hub showcases local artists in on-site gallery exhibits. Jacoby Arts Center is also home to local art classes, art events and summer camps. Jacoby also offers open studio time for artists of all levels.



SCAN HERE
FOR MORE
LOCAL ART



BLACKBIRD BAKERY & CAFÉ

SAVORY SWEETS

Apple pie. Fresh baked breads. Sweet cakes. Fall and winter is full of savory treats.

Blackbird Bakery & Café
123 E. Main St.,
Staunton
618-635-2288

Patisserie 29
921 Arbor Vitae Dr.,
Edwardsville
618-307-5196

222 Artisan Bakery & Café
222 St. Louis St.,
Edwardsville
618-692-5033

Chocolate Covered Creations
218 N. Main St.,
Edwardsville
618-500-1069

3214 Nameoki Rd.,
Granite City
(618) 500-1069

Duke Bakery
819 Henry St., Alton
618-462-2922

Cookie Factory Bakery & Café
192 Alton Square Mall Dr.,
Suite B, Alton
(618) 462-5731

My Just Desserts
31 E. Broadway, Alton
618-462-5881

LuciAnna's Bistrot & Patisserie
1020 W. Delmar, Godfrey
618-433-9989

Jubelt's Bakery & Restaurant
303 North Old Route 66,
Litchfield
217-324-5314

Kruta Bakery
300 St. Louis Rd.,
Collinsville
618-344-1115

Espresso Yourself Bakery
410 W. Carpenter,
Jerseyville
618-639-2877



SCAN FOR
MORE
SAVORY
SWEET
LOCATIONS



PARK NORTH GOLF CLUB

40 State-of-the-Art
TrackMan
driving
range bays



18-Hole
championship
putting course



Scotty's Sports Bar & Grill
with delicious food
and an unbeatable
game-day
atmosphere



Spacious Covered Patio
with outdoor TVs
and games



Whether you're a seasoned golfer or trying something new with the family, there's something for everyone!

THE METRO EAST'S PREMIER GOLF ENTERTAINMENT DESTINATION



NOW OPEN IN EDWARDSVILLE!

PLAN YOUR VISIT!

parknorthgolfclub.com | 618-307-7447
3601 Sports Park Dr., Edwardsville, IL 62025



GOLDEN EAGLE FERRY

TAKE A SCENIC FERRY RIDE ACROSS THE MIGHTY MISSISSIPPI RIVER BETWEEN HISTORIC ST. CHARLES, MISSOURI & BEAUTIFUL CALHOUN COUNTY, ILLINOIS

Visit Calhoun County year-round for a fascinating journey through the historic and quaint communities, hiking trails, restaurants, roadside stands and orchards that make up the countryside. And it all starts with a ferry ride!



Mon - Thurs • 5am - 9pm
Fri - Sat • 5am - 2am
Sunday • 8am - 9pm

Open Holidays • 8am - 9pm
75 Ton Load Limit

Find us on Facebook



For more info call
(618)535-5759
or visit
CalhounFerryCompany.com



For more info on
visiting Calhoun
County go to
CalhounIL.org



For info on the
Grafton Ferry visit
TheGraftonFerry.com
or call **(618)465-6676**

